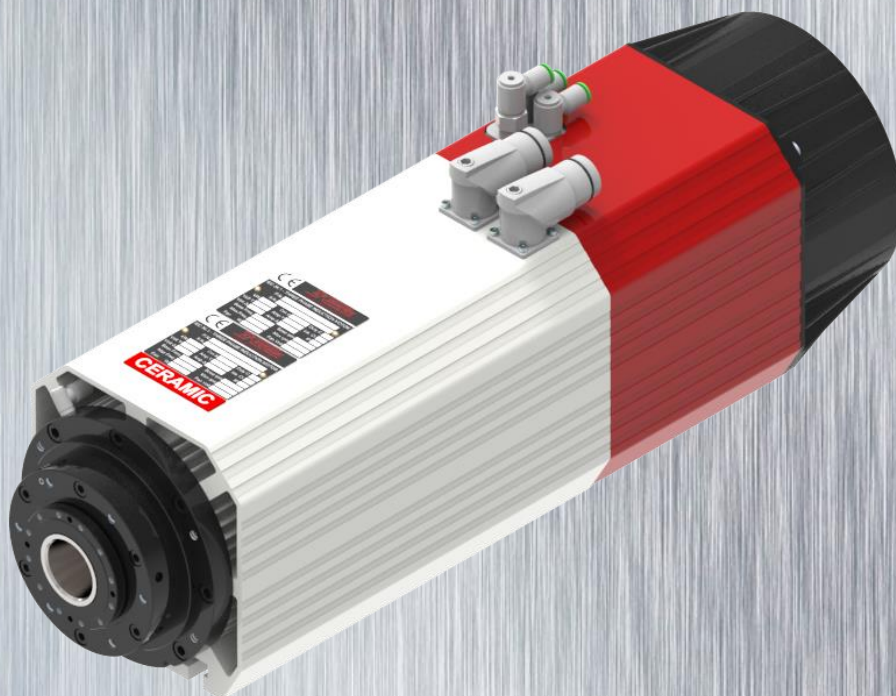


# TEK N O M O T O R

## AUTOMATIC TOOL CHANGER ATC 71 CATALOGUE

RELEASE 1.0



High performance

[www.teknomotor.com](http://www.teknomotor.com)

[Next page - Avanti](#)





**BY CAR – IN MACCHINA – MIT DEM AUTO**

From motorway – Dalla autostrada – Aus dem Autobahn:  
**A27 (Venezia-Belluno)**  
Exit – Uscita – Ausgang  
Treviso Nord

**BY TRAIN – IN TRENO – MIT DEM ZUG**

Nearest station – Stazione più vicina – Bahnhof  
Feltre

**BY PLANE – IN AEREO – MIT FLUGZEUG**

Venezia (Marco Polo)

## TEKNOMOTOR s.r.l.

Via Argenega, 31 - 32038 Quero Vas (BL) Italy

Tel. +39 0439 787950 – fax. +39 0439 780147

Partita IVA 00929130250

[info@teknomotor.com](mailto:info@teknomotor.com)

[www.teknomotor.com](http://www.teknomotor.com)

## L'AZIENDA

Fondata nel 1983 la società Teknomotor s.r.l. progetta e produce da oltre 30 anni motori elettrici ed elettromandri per applicazioni meccaniche. Azienda in costante espansione, Teknomotor s.r.l. è attualmente impegnata sul mercato mondiale come fornitore di importanti aziende costruttrici i macchine per la lavorazione del legno, PVC e alluminio.

All'unità produttiva principale di Quero (BL) è stata recentemente affiancata un'ulteriore sede dedicata esclusivamente all'assemblaggio e collaudo finale dei motori. Tutte le fasi della produzione si avvalgono delle più avanzate tecnologie in materia di sistemi di disegno CAD, macchine utensili a controllo numerico e banchi prova computerizzati. Le lavorazioni meccaniche sono effettuate all'interno, in modo da garantire un costante controllo del processo produttivo unito ad un elevato grado di flessibilità che ci permette di soddisfare commesse di grande e piccola serie.

A ciò si aggiunge un'attenta scelta dei fornitori esterni, nostri partner commerciali, al fine di garantire un prodotto esente da difetti e di qualità superiore.

Fin dalla nascita Teknomotor s.r.l. si è distinta per la cortesia nei confronti della propria clientela e per la disponibilità nello sviluppare nuove soluzioni in stretta collaborazione con il committente.

## COMPANY

Founded in 1983 Teknomotor s.r.l. has for over 30 years designed and developed electric motors and electrospindles for mechanical applications. As a constant growing Company, Teknomotor s.r.l. is currently engaged on worldwide market as supplier of important Companies specialized in the construction of machinery for the working of wood, PVC and aluminum. The established headquarters in Quero (BL) Italy, was recently enlarged with a new building dedicated exclusively to the assembly and final test of the motors. All the production phases use, at every stage, advanced technologies to ensure maximum quality, such as the CAD design software, machine tool with numeric control and computerized trials. The mechanical operations are carried out internally, in order to guarantee a constant control of the productive process and a high level of flexibility, which allows both large and small commissions to be fulfilled.

A careful selection of external suppliers, commercial partners, is made in order to guarantee an high quality product without defects.

From its birth Teknomotor s.r.l. has distinguished it self for the courtesy it shows its clients and for the commitment it has to develop new solutions in close collaboration with the buyer.

## FIRMA

Die Firma Teknomotor s.r.l. wurde im Jahr 1983 gegründet. Seit mehr als 30 Jahren plant und produziert sie elektrische Motoren und Spindeln für mechanische Anwendungen. Teknomotor s.r.l. hat eine ständige Expansion bekannt und sie ist im Moment mit dem Weltmarkt beschäftigt. Sie versorgt mit ihren Motoren, wichtige und bekannte Firmen, die Holz-, PVC- und Aluminiummaschinen bauen. Der Hauptsitz in Quero (BL) war vor kurzem erweitert. In dem neuen Gebäude wird die Montage und die Prüfung gemacht. Vorgeschrittene Technologie wird benutzt, um die Qualität immer zu verbessern, wie z.B. CAD Plansysteme, numerische Kontrolle- Maschinen und computerisierte Prüfstände. Vorgeschrittene Technologie wird benutzt, um die Qualität immer zu verbessern, wie z.B. CAD Plansysteme, numerische Kontrolle- Maschinen und computerisierte Prüfstände. Die ganzen mechanischen Bearbeitungen sind in der Firma realisiert, so eine ständige Kontrolle der Produktion und hohe Flexibilität sind garantiert. Sowohl die kleinen Bestellungen als auch die größere können ohne Probleme erfüllt werden.

Es wird außerdem eine aufmerksame Wahl der Lieferanten, um ein Produkt ohne Defekte und von höherer Qualität zu garantieren. Von Geburt hat Teknomotor s.r.l. für ihre Höflichkeit und ihre Verfügung sich unterschieden, so sie, sehr schnell, immer neue Lösungen in Zusammenarbeit mit den Kunden vorschlagen und entwickeln kann.

# AUTOMATIC TOOL CHANGERS GENERAL FEATURES

## GENERAL INFORMATION

The Automatic Tool Changer electrospindle (ATC) have been designed to develop high speeds and powers with limited overall dimensions.

The standard models operate between 3000 rpm and 24000 rpm. The powers go from 3.8 to 12.0 kW.

These features make them ideal for use on automatic machines for machining wood, aluminum alloys and plastics.

ATCs are used mainly on CNC routers, machines for drilling, and for automation in general (Electrospindle mounted directly on anthropomorphic robot).

ATCs are cooled by an industrial electric fan 230V AC 50-60 Hz. On customer's request they can be cooled by compressed air using a special kit.

ATCs are pneumatically sealed and thus protected against the entry of any type of contaminants.

The stiffness of mechanical components, the speed of tool changing and the goodness of electrical components are key features of the ATC, which is produced by Teknomotor as a best in class product, for the most demanding costumers.

## INFORMAZIONI GENERALI

Gli elettromandri con cambio utensile automatico (ATC - Automatic tool changers) sono stati progettati per sviluppare elevate velocità e potenze unite ad un ingombro limitato.

I modelli standard operano tra 3000 rpm e 24000 rpm. Le potenze disponibili variano tra 3.8 kW e 12.0 kW.

Queste caratteristiche li rendono ideali per l'impiego su macchine per la lavorazione del legno, delle leghe di alluminio e delle materie plastiche.

Gli ATC vengono impiegati prevalentemente nel settore delle macchine CNC routers, delle foratrici, dell'automazione in generale (Elettromandrino montato direttamente su robot antropomorfo).

Per le loro caratteristiche costruttive gli elettromandri sopportano un carico di tipo assiale, radiale o misto.

Gli ATC sono raffreddati per mezzo di un'elettroventola 230V-AC 50-60Hz di tipo industriale. Su richiesta possono essere raffreddati da aria compressa tramite un apposito kit.

Gli ATC sono pressurizzati e quindi protetti contro l'ingresso di qualsiasi tipo di contaminanti.

La rigidità dei suoi componenti, la velocità di cambio utensile e la qualità dei componenti elettrici sono caratteristiche peculiari di questo elettromandrino, che Teknomotor realizza come prodotto di prima scelta, per i clienti più esigenti.

## ALLGEMEINE INFORMATIONEN

Die Elektrospindeln mit automatischem Werkzeugwechsel (genannt ATC = Automatic Tool Changers) wurden ausgelegt, um bei einem beschränkten Raumbedarf hohe Geschwindigkeiten bzw. Leistungen zu erreichen.

Die Standardmodelle sind zwischen 3000 und 24000 U/min tätig. Die verfügbaren Leistungen variieren zwischen 3.8 kW und 12.0 kW).

Dafür sind sie für den Einsatz an Maschinen für die Holz- bzw. Aluminiumlegierungs- und Kunststoffbearbeitung geeignet.

Die ATC kommen vorwiegend im Bereich CNC Routers, Bohrmaschinen und in der Automation im Allgemeinen (Elektrospindel direkt auf dem anthropomorphen Roboter installiert) zum Einsatz.

Dank ihrer Bauweise können die Elektrospindel einer radialen, axialen und miteinander kombinierten Belastung standhalten.

Die ATC werden mittels eines Elektroventils von 230V AC 50-60 Hz (industrieller Typ) gekühlt. Auf Anforderung können von einem Spezialset abgekühlt werden.

Da die ATC mit Luftdruck beaufschlagt werden, werden sie gegen den Eintritt von kontaminierenden Substanzen geschützt.

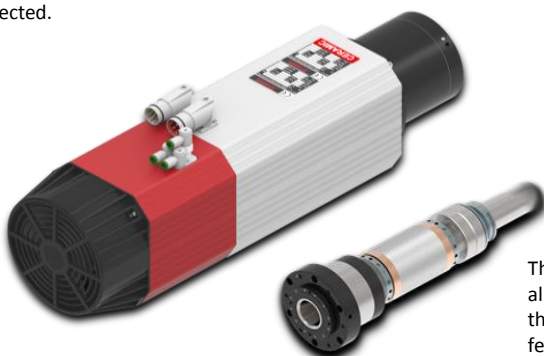
Die Steifigkeit ihrer Bauelemente, die Geschwindigkeit des Werkzeugwechsels und die Qualität der elektrischen Komponenten gehören zu den typischen Eigenschaften dieser Elektrospindel, die Teknomotor als Produkt erster Wahl für anspruchsvolle Kunden realisiert.



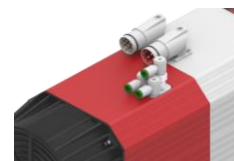
The electric fan ensures a constant cooling at every speed. All items are supplied with serial number and part number which refers to the mechanical and electrical test.

## MAIN CHARACTERISTICS

The compact design of the frame permits the ATC71 to be mounted in small spaces. All connectors are well ordered. The signal connector is separated from the power connector to prevent electromagnetic noise. All the sensors connectors are shielded and IP54 protected.



The smart design allows to replace the cartridge in a few steps.



The frame is robust and compact; it is designed to be stiff and light. The nose is pneumatically sealed against dust. The ceramic bearings assure high speeds, up to 24000 rpm.



TECHNICAL FEATURES TABLE	STATOR		ROTOR		SHAPE	COOLING	PROTECTION GRADE
	TYPE	INSULATION	TYPE	BALANCING GRADE			
<b>Automatic tool changers (ATC71)</b>	Asynchronous, 3 phases	F class	Squirrel cage	2.5 (ISO 1940)	Closed, from extruded aluminum profile	Electric fan cooling	<b>IP 54</b>

The electrospindles conform to the EMC EEC 89/336 directive, and to the EEC 89/392 machines directive. Moreover, the electrospindle cannot be put into service before the machine into which it is incorporated is declared to be in line with the second mentioned directive.

Gli elettromandri sono conformi alla direttiva EMC CEE 89/336 e alla direttiva macchine CEE 89/392 assumendo per quest'ultima che l'elettromandrino non può essere messo in servizio prima che la macchina, in cui sarà incorporato, sia stata dichiarata conforme alle disposizioni.

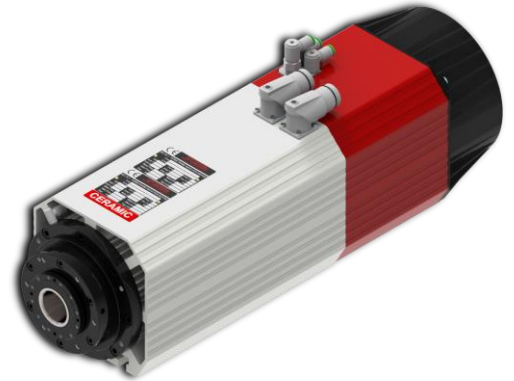
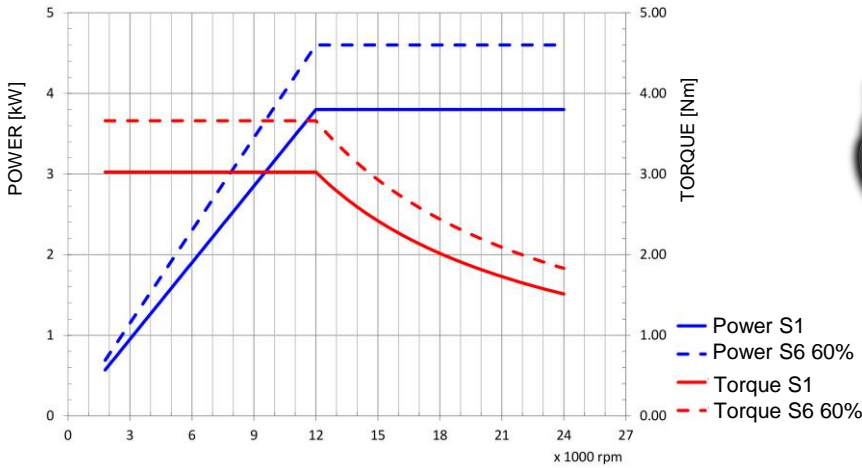
Die Elektrospindel entsprechen der EMV-Richtlinie EWG 89/336 und der Maschinenrichtlinie EWG 89/392. Diese letzte Norm setzt voraus, dass der Motor erst dann in Betrieb gesetzt werden darf, wenn die Maschine, in die er eingebaut wird, die dafür vorgesehenen Richtlinien erfüllt.

<b>ATC71 ELECTROSPINDLES</b>						
<b>Power</b> <b>Nose</b>	<b>3.8/4.6 kW</b> <b>380V</b> <b>2 poles</b>	<b>5.0/6.0 kW</b> <b>380V</b> <b>4 poles</b>	<b>5.5/6.6 kW</b> <b>380V</b> <b>2 poles</b>	<b>7.5/9.0 kW</b> <b>380V</b> <b>4 poles</b>	<b>7.5/9.0 kW</b> <b>380V</b> <b>2 poles</b>	<b>10.0/12.0 kW</b> <b>380V</b> <b>4 poles</b>
<b>ISO30-SN</b>	COMTC710001 <a href="#">Pag. 6</a>	COMTC710020 <a href="#">Pag. 7</a>	COMTC710004 <a href="#">Pag. 10</a>	COMTC710022 <a href="#">Pag. 11</a>	COMTC710003 <a href="#">Pag. 18</a>	COMTC710024 <a href="#">Pag. 19</a>
<b>ISO30-LN</b>	COMTC710007 <a href="#">Pag. 8</a>	COMTC710021 <a href="#">Pag. 9</a>	COMTC710008 <a href="#">Pag. 12</a>	COMTC710014 <a href="#">Pag. 13</a>	COMTC710009 <a href="#">Pag. 20</a>	COMTC710025 <a href="#">Pag. 21</a>
<b>HSK63F-SN</b>	-	-	COMTC710023 <a href="#">Pag. 14</a>	COMTC710018 <a href="#">Pag. 15</a>	COMTC710028 <a href="#">Pag. 22</a>	COMTC710026 <a href="#">Pag. 23</a>
<b>HSK63F-LN</b>	-	-	COMTC710006 <a href="#">Pag. 16</a>	COMTC710015 <a href="#">Pag. 17</a>	COMTC710005 <a href="#">Pag. 24</a>	COMTC710027 <a href="#">Pag. 25</a>

<b>ACCESSORIES FOR ATC71 ELECTROSPINDLES</b>	
CABLE SETS	<a href="#">Pag. 26</a>
TOOLHOLDERS, COLLETS and NUTS	<a href="#">Pag. 27</a>
FORKS and INVERTERS	<a href="#">Pag. 28</a>

# ATC71-A-ISO30-SN

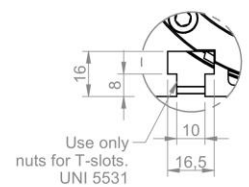
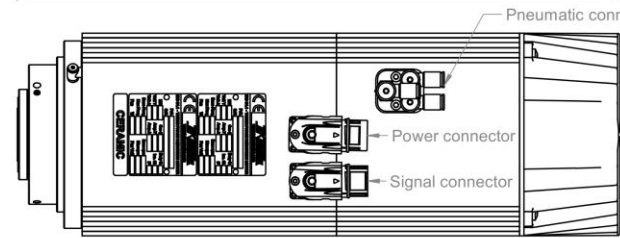
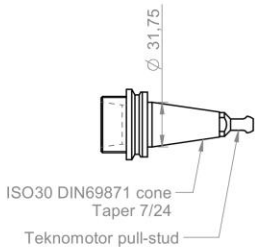
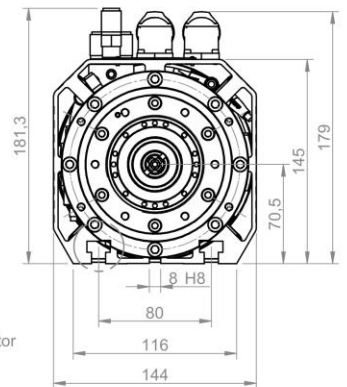
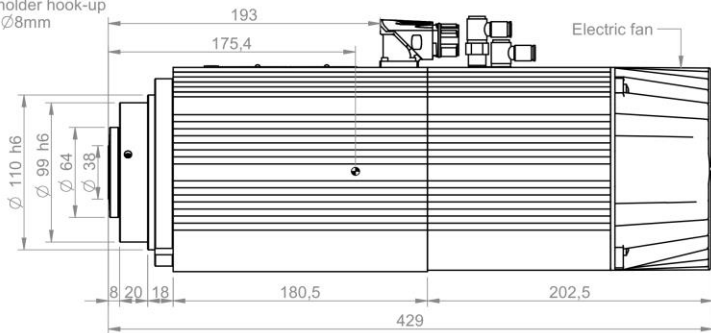
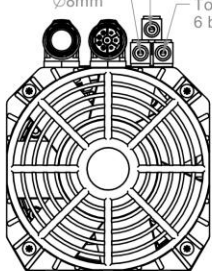
ATC71-A TORQUE AND POWER CURVES



Motor code: **COMTC710001**

Power S1: 3.8 Kw (S1) @ 12000 rpm  
 Power S6: 4.6 Kw (S6) @ 12000 rpm  
 Voltage: 380V (option 220V)  
 Poles: 2  
 Max speed: 24000 rpm @ 400 Hz  
 Bearings: Ceramic, front and rear

Tool-holder release 6 bar Ø8mm  
 Pressurization 6 bar Ø8mm (Automatic cone cleaning included)  
 Tool-holder hook-up 6 bar Ø8mm



Power [kW]	Duty Cycle	Base speed [rpm]	Base freq. [Hz]	Base voltage Δ [V]	Base voltage Y [V]	Protection	Ins. Cl.
3.8/4.6	S1/S6-60 %	12000	200	380	380	IP54	F
Min speed [rpm]	Max speed [rpm]	Max freq. [Hz]	Absorb. Δ [A]	Absorb. Y [A]	Part number on nameplate		
3000	24000	400	8.3/10.0	8.3/10.0	COMTC710001		
Balancing: G2.5 - ISO 1940 @ maximum motor speed	Balancing type	Foot type	Foot type	Foot type	Peso / weight		
		Ø 10	Ø 10	Ø 10	20.79 kg		



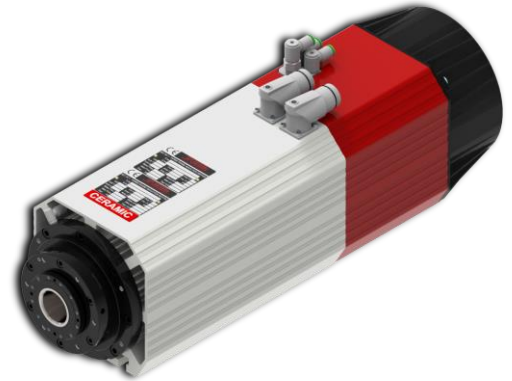
Power connector	
1	U
2	V
3	W
GND	Ground
A	Fan (L) 220V
B	Thermal protection
C	Thermal protection
D	Fan (N) 220V

Signal connector	
1	S1
2	S2
3	S3 tacho
4	not used
5	S5
6	0 V
7	+24V DC

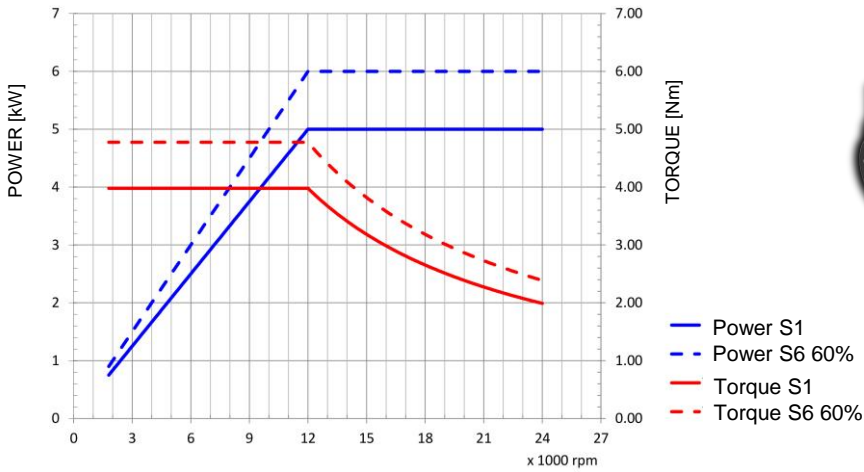
Tolerance non quotate / unlisted tolerances: ±0.5mm Smussi non quotati / unlisted chamfers: ±0.5mm		Title	
rev. n° / description		ATC71-A-ISO30-SN	
00 Emissione		Customer	
		Catalogo	
		Drawing code	
		COMTC710001	
		Drawing n°	
		2673	
drawn - date	approved - date	checked - date	substituisce il
D. Bottarel - 05/08/2014	S. Perli - 05/08/2014	S. Perli - 05/08/2014	substituisce il
foglio / sheet		scala	
1 / 1		n.d.	

Il presente disegno è di proprietà esclusiva di Teknomotor S.r.l. La riproduzione totale o parziale o la divulgazione a terzi, senza nostro esplicito consenso scritto, verrà perseguito secondo i termini di legge in vigore.

ATC71-A-ISO30-SN

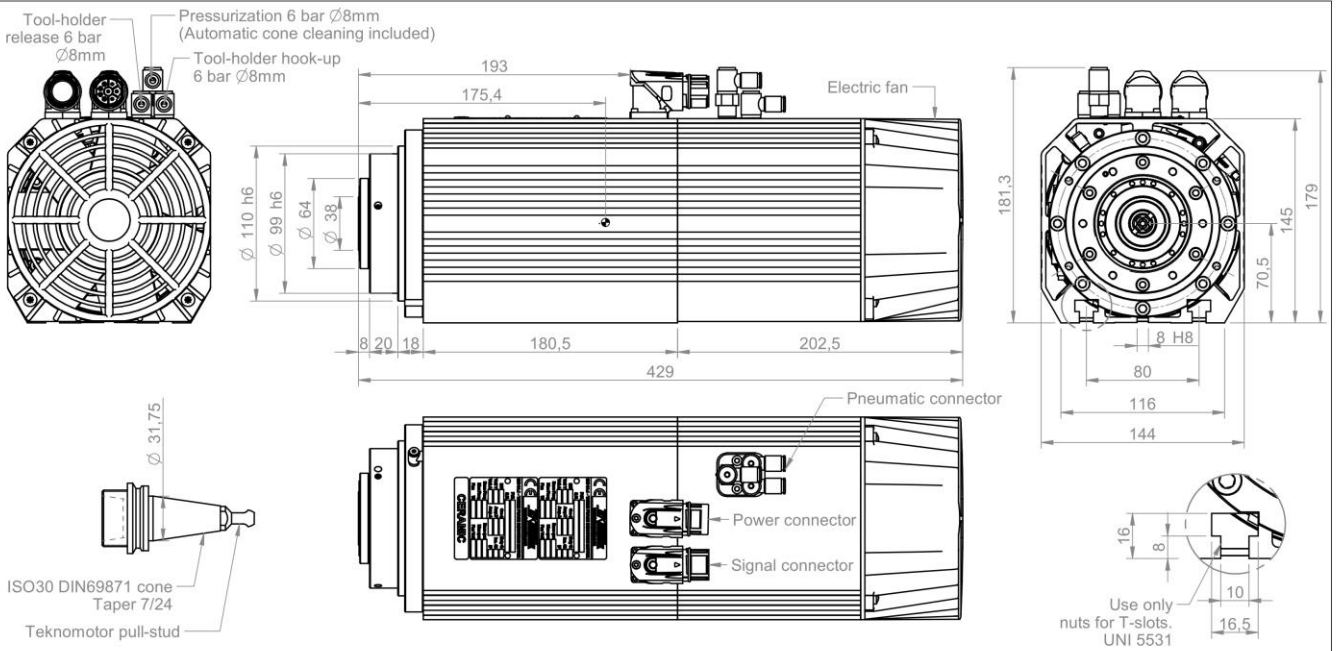


ATC71-A TORQUE AND POWER CURVES



Motor code: **COMTC710020**

Power S1: 5.0 Kw (S1) @ 12000 rpm  
 Power S6: 6.0 Kw (S6) @ 12000 rpm  
 Voltage: 380V (option 220V)  
 Poles: 4  
 Max speed: 24000 rpm @ 800 Hz  
 Bearings: Ceramic, front and rear



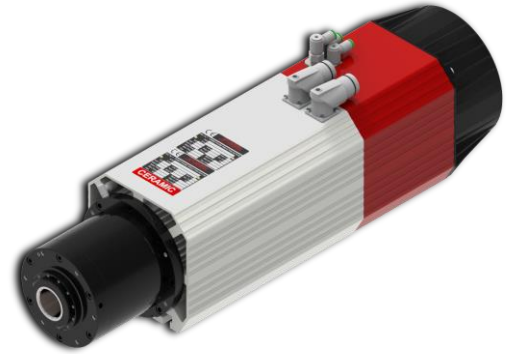
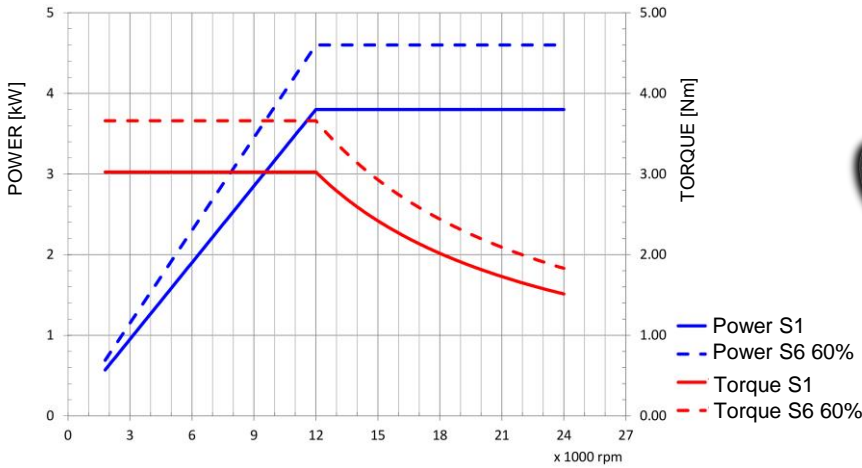
Power connector	
1	U
2	V
3	W
GND	Ground
A	Fan (L) 220V
B	Thermal protection
C	Thermal protection
D	Fan (N) 220V

Signal connector	
1	S1
2	S2
3	S3 tacho
4	not used
5	S5
6	0 V
7	+24V DC

Power [kW]	5.0/6.0	Duty Cycle	S1/S6 60%	Base speed [rpm]	12000	Base freq. [Hz]	400	Base voltage Δ [V]	380	Base voltage Y [V]	12.0/14.0	Protection	IP54	Ins. Cl.	F
Min speed [rpm]	3000	Max speed [rpm]	24000	Max freq. [Hz]	800	Absorb. Δ [A]		Absorb. Y [A]		Part number on nameplate <b>COMTC710020</b>					
Balancing: G2.5 - ISO 1940 @ maximum motor speed				Balancing type		Foot type		Foot type		Foot type		Peso / weight <b>25.54 kg</b>			
Tolerance non quotati / unlisted tolerances: ±0.5mm Smussi non quotati / unlisted chamfers: +0.5mm															
rev. n°		description								date		signature			
00		Emissione								10/01/2017		D. Bottarel			
Title <b>ATC71-A-ISO30-SN-4P</b>															
Customer <b>Catalogo</b>															
Drawing code <b>COMTC710020</b>												Drawing n° <b>2673</b>			
drawn - date D. Bottarel - 05/08/2014				approved - date S. Peri - 05/08/2014				checked - date S. Peri - 05/08/2014				sostituisce il sostituito dal			
foglio / sheet 1 / 1		scala n.d.		A4											

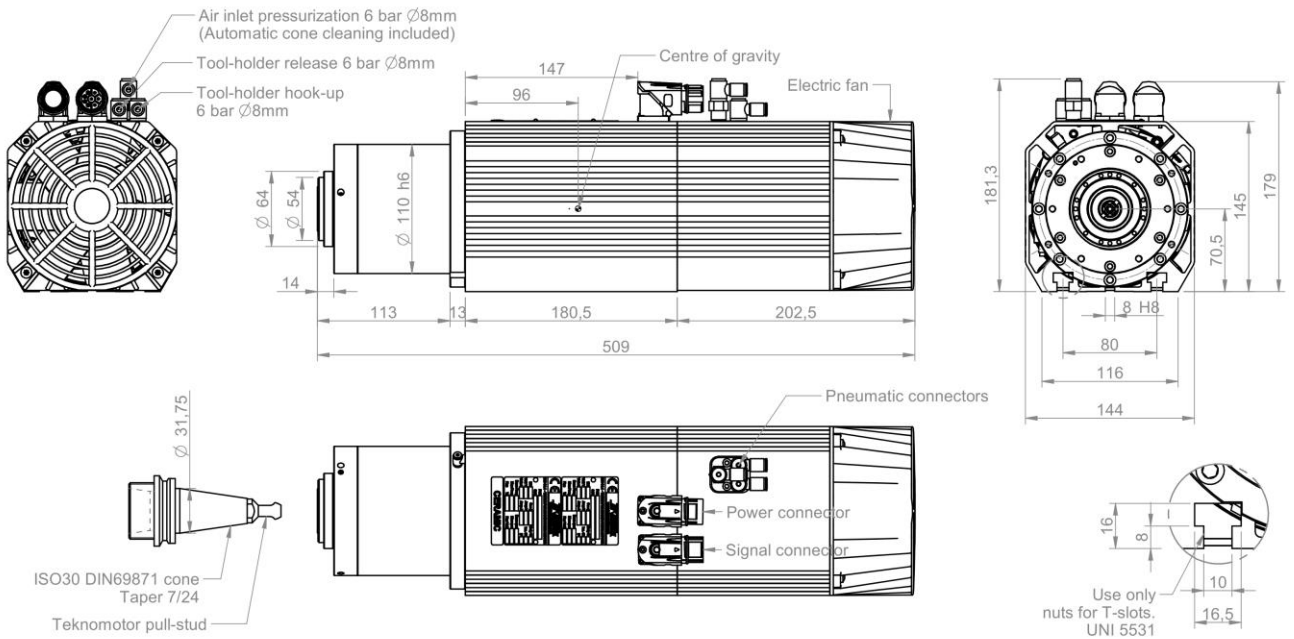
# ATC71-A-ISO30-LN

ATC71-A TORQUE AND POWER CURVES



Motor code: **COMTC710007**

Power S1: 3.8 Kw (S1) @ 12000 rpm  
 Power S6: 4.6 Kw (S6) @ 12000 rpm  
 Voltage: 380V (option 220V)  
 Poles: 2  
 Max speed: 24000 rpm @ 400 Hz  
 Bearings: Ceramic, front and rear



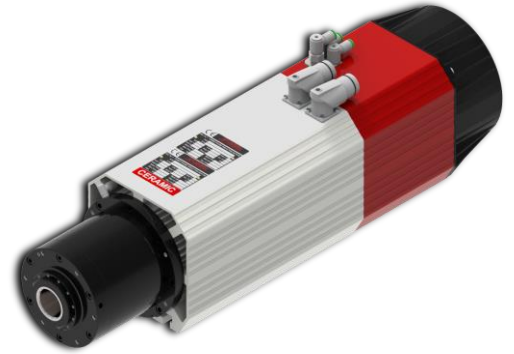
Power connector	
1	U
2	V
3	W
GND	Ground
A	Fan (L) 220V
B	Thermal protection
C	Thermal protection
D	Fan (N) 220V

Signal connector	
1	S1
2	S2
3	S3 tacho
4	not used
5	S5
6	0 V
7	+24V DC

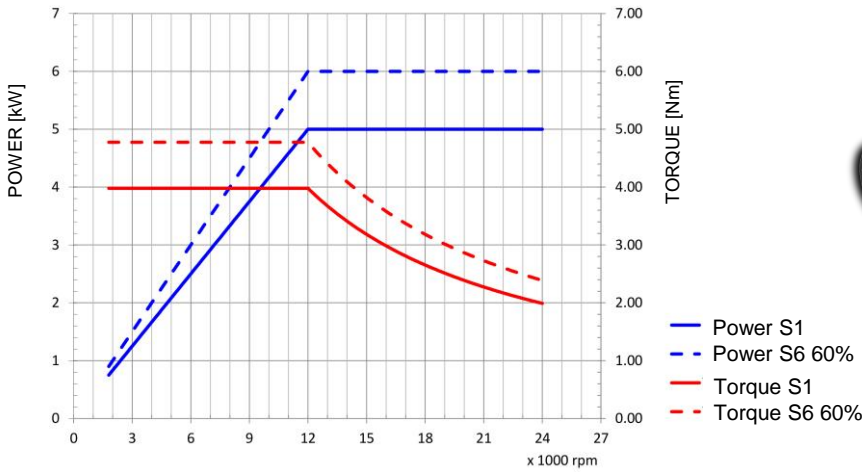
Power [kW]	3.8/4.6	Duty Cycle	S1/S6-60 %	Base speed [rpm]	12000	Base freq. [Hz]	200	Base voltage Δ [V]	380	Base voltage Y [V]	380	Protection	IP54	Ins. Cl.	F	
Min speed [rpm]	3000	Max speed [rpm]	24000	Max freq. [Hz]	400	Absorb. Δ [A]	8.3/10.0	Absorb. Y [A]	8.3/10.0	Part number on nameplate	COMTC710007					
Balancing	G2.5 - ISO 1940 @ maximum motor speed	Balancing type	400	Foot type		Foot key		Foot type		Foot key		Peso / weight	26.34 kg	Title <b>ATC71-A-ISO30-LN</b>		
rev. n°	00	description	Emissione	date	03/09/2014	signature	D. Bottarel	Customer <b>Catalogo</b>			Drawing code <b>COMTC710007</b>					
drawn - date	D. Bottarel - 03/09/2014	approved - date	S. Perli - 03/09/2014	checked - date	S. Perli - 03/09/2014	sostituisce il		folgio / sheet	1 / 1	scala	1:4	Drawing n° <b>3294</b>				



# ATC71-A-ISO30-LN

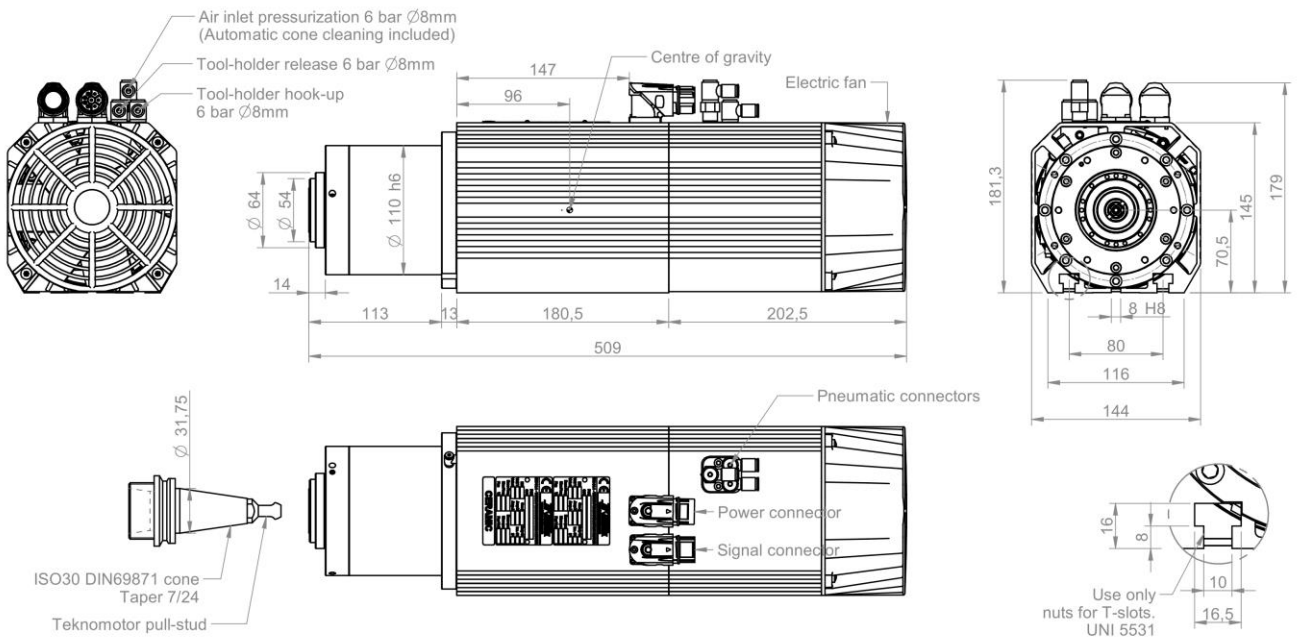


ATC71-A TORQUE AND POWER CURVES



Motor code: **COMTC710021**

Power S1: 5.0 Kw (S1) @ 12000 rpm  
 Power S6: 6.0 Kw (S6) @ 12000 rpm  
 Voltage: 380V (option 220V)  
 Poles: 4  
 Max speed: 24000 rpm @ 800 Hz  
 Bearings: Ceramic, front and rear



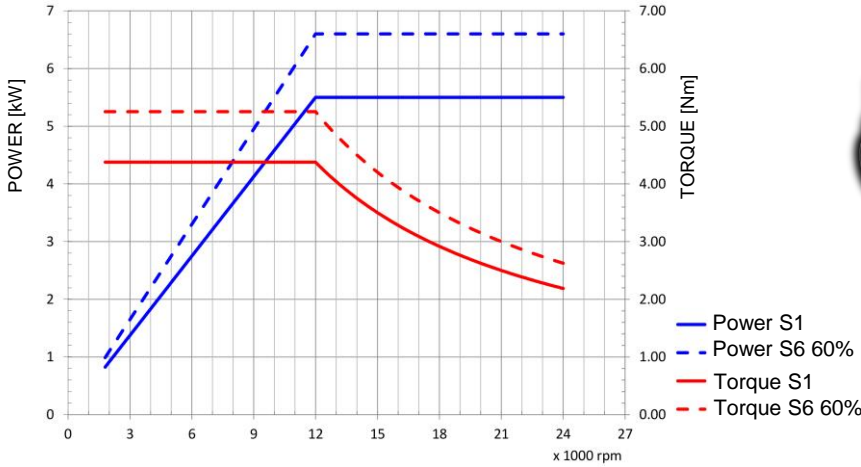
Power connector	
1	U
2	V
3	W
GND	Ground
A	Fan (L) 220V
B	Thermal protection
C	Thermal protection
D	Fan (N) 220V

Signal connector	
1	S1
2	S2
3	S3 tacho
4	not used
5	S5
6	0 V
7	+24V DC

Power [kW]	5.0/6.0	Duty Cycle	S1/S6-60 %	Base speed [rpm]	12000	Base freq. [Hz]	400	Base voltage Δ [V]	380	Base voltage Y [V]	12.0/14.0	Protection	IP54	Ins. Cl.	F						
Min speed [rpm]	3000	Max speed [rpm]	24000	Max freq. [Hz]	800	Absorb. Δ [A]		Absorb. Y [A]		Part number on nameplate	COMTC710021										
Balancing: G2.5 - ISO 1940 @ maximum motor speed		Balancing type		Foot type		Foot type		Peso / weight		25.84 kg											
Tolerance non quotata / unlisted tolerances: ±0.5mm Smussi non quotati / unlisted chamfers: +0.5mm																					
rev. n°	00	description		Emissione		date	26/01/2017	signature		D. Bottarel											
drawn - date										approved - date		checked - date		sostituisce il		foglio / sheet		scala		A4	
D. Bottarel - 26/01/2017										S. Perli - 26/01/2017		S. Perli - 26/01/2017		sostituito dal		1 / 1		1:4		5034	
Title: ATC71-A-ISO30-LN-4P Customer: <b>Catalogo</b> Drawing code: COMTC710021 Drawing n°: 5034																					

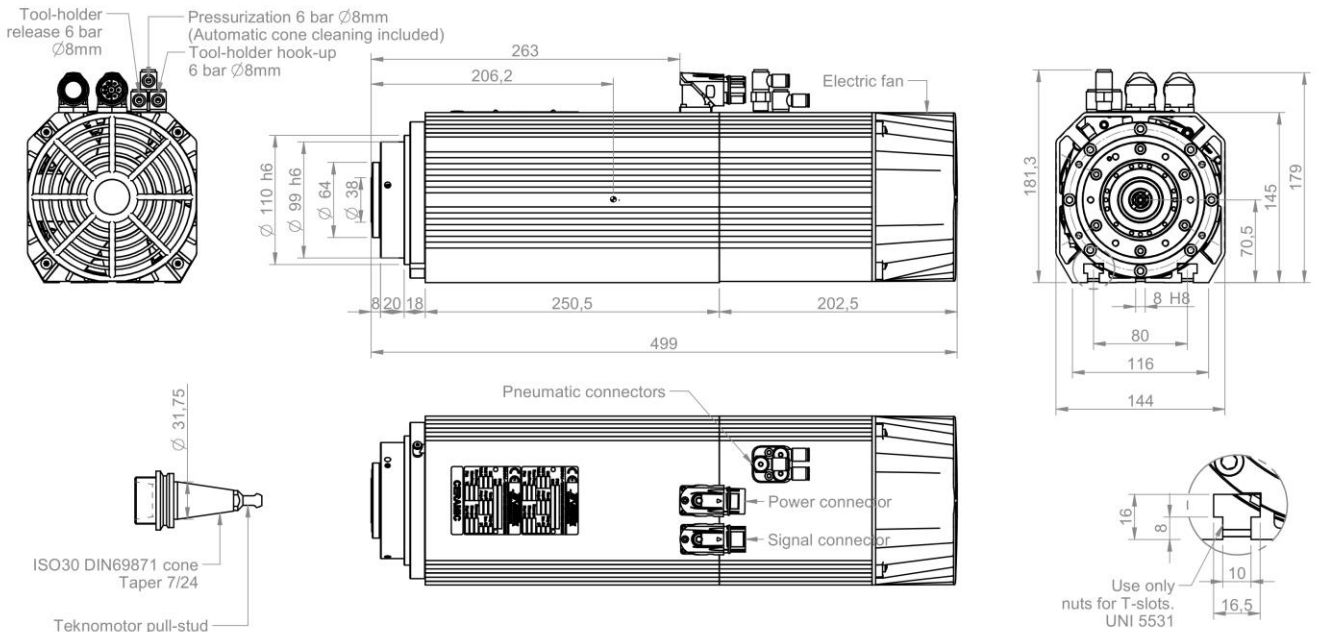
# ATC71-B-ISO30-SN

ATC71-B TORQUE AND POWER CURVES



Motor code: **COMTC710004**

Power S1: 5.5 Kw (S1) @ 12000 rpm  
 Power S6: 6.6 Kw (S6) @ 12000 rpm  
 Voltage: 380V (option 220V)  
 Poles: 2  
 Max speed: 24000 rpm @ 400 Hz  
 Bearings: Ceramic, front and rear



Power connector	
1	U
2	V
3	W
GND	Ground
A	Fan (L) 220V
B	Thermal protection
C	Thermal protection
D	Fan (N) 220V

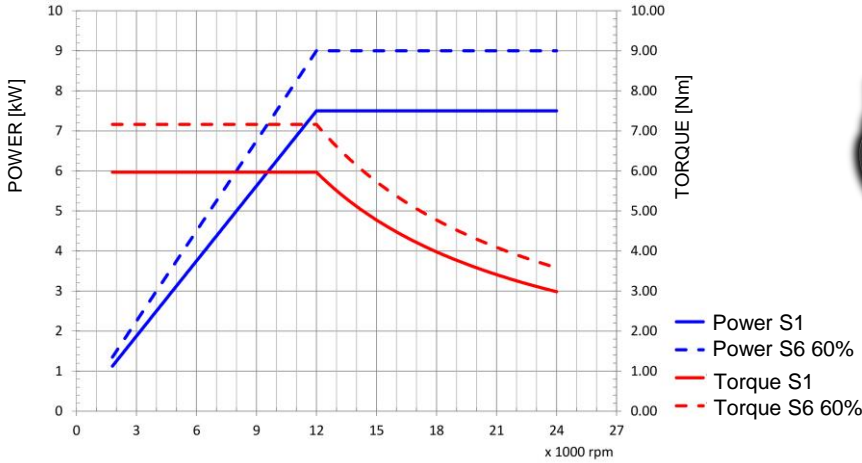
Signal connector	
1	S1
2	S2
3	S3 tacho
4	not used
5	S5
6	0 V
7	+24V DC

Power [kW]	Duty Cycle	Base speed [rpm]	Base freq. [Hz]	Base voltage $\Delta$ [V]	Base voltage Y [V]	Protection	Ins. Cl.
5.5/6.6	S1/S6-60%	12000	200	380	380	IP54	F
Min speed [rpm]		Max speed [rpm]		Absorb. $\Delta$ [A]		Part number on nameplate	
3000		24000		11.4/13.4		COMTC710004	
Balancing: G2.5 - ISO 1940 @ maximum motor speed			Balancing type		Peso / weight		
			400		24.83 kg		
Tolerance non quotata / unlisted tolerances: $\pm 0.5\text{mm}$ Smussi non quotati / unlisted chamfers: $\pm 0.5\text{mm}$							
rev. n°		description		date		signature	
00		Emissione		05/09/2014		D. Bottarel	
drawn - date				approved - date		checked - date	
D. Bottarel - 05/09/2014				S. Peris - 05/09/2014		S. Peris - 05/09/2014	
sostituisce il				sostituito dal			
Title				Customer			
ATC71-B-ISO30-SN				Catalogo			
Drawing code				Drawing n°			
COMTC710004				1674			
foglio / sheet		scala		A4			
1 / 1		1:4					

# ATC71-B-ISO30-SN



ATC71-B TORQUE AND POWER CURVES



Motor code: **COMTC710022**

Power S1: 7.5 Kw (S1) @ 12000 rpm  
 Power S6: 9.0 Kw (S6) @ 12000 rpm  
 Voltage: 380V (option 220V)  
 Poles: 4  
 Max speed: 24000 rpm @ 800 Hz  
 Bearings: Ceramic, front and rear

ISO30 DIN69871 cone  
Taper 7/24

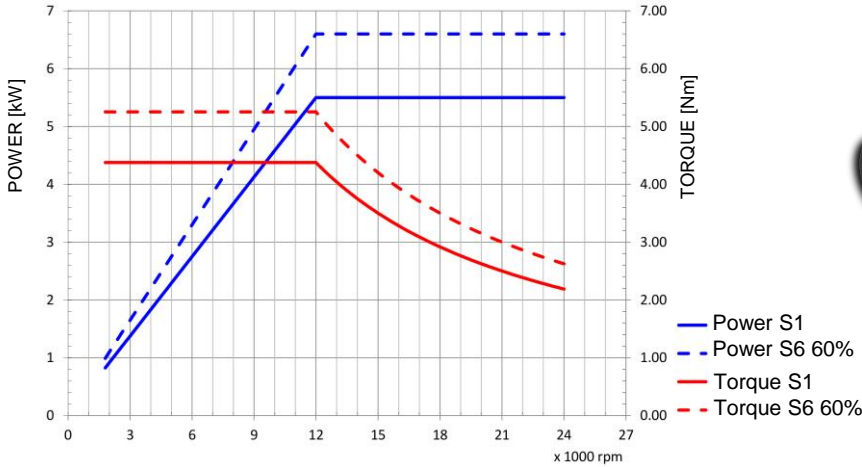
Teknomotor pull-stud

Use only nuts for T-slots. UNI 5531

Power [kW]	Duty Cycle	Base speed [rpm]	Base freq. [Hz]	Base voltage Δ [V]	Base voltage Y [V]	Protection	Ins. Cl.
7.5/9.0	S1/S6-60 %	12000	400	380	380	IP54	F
Min speed [rpm]		Max speed [rpm]		Absorb. Δ [A]		Part number on nameplate	
3000		24000		15.7/19.0		COMTC710022	
Balancing: G2.5 - ISO 1940 @ maximum motor speed			Balancing type		Peso / weight		
			Foot type		25.13 kg		
Tolerance non quotati / unlisted tolerances: ±0.5mm Smussi non quotati / unlisted chamfers: +0.5mm							
rev. n°				date		signature	
00				26/01/2017		D. Bottarel	
Description							
Emissione							
drawn - date		approved - date		checked - date		sostituisce il	
D. Bottarel - 26/01/2017		S. Peris - 26/01/2017		S. Peris - 26/01/2017		sostituito dal	
Title				Customer			
ATC71-B-ISO30-SN-4P				Catalogo			
Drawing code				Drawing n°			
COMTC710022				5055			
foglio / sheet		scala		A4			
1 / 1		1:4					

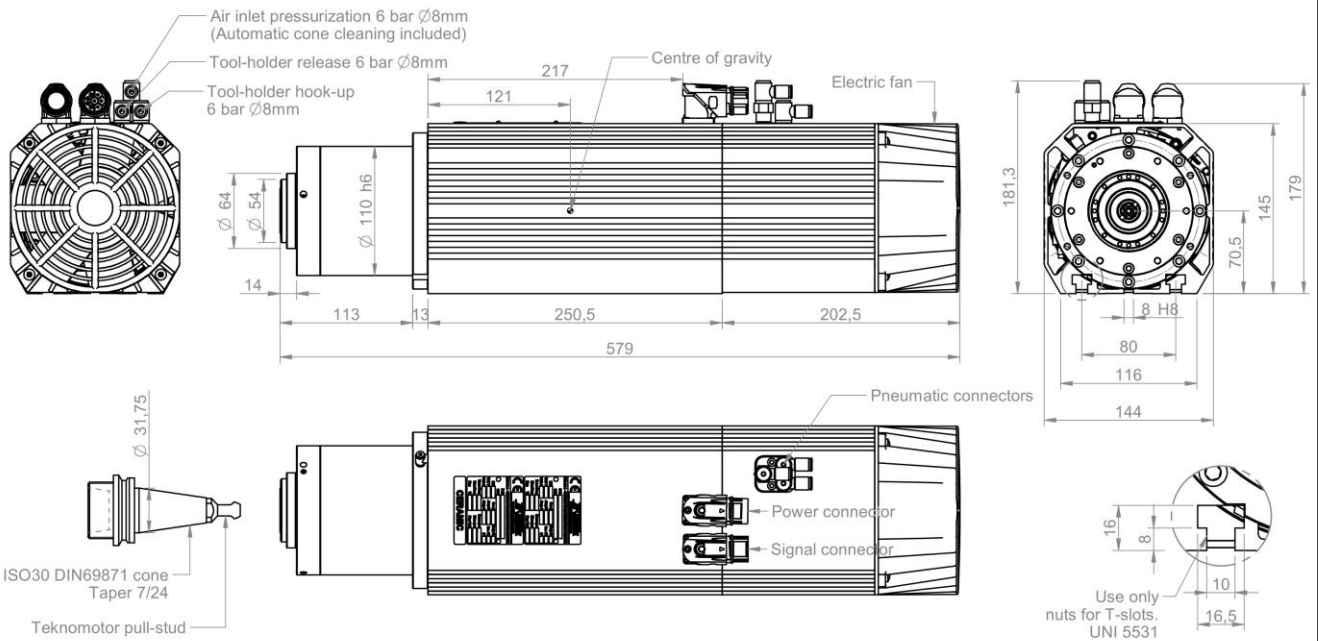
# ATC71-B-ISO30-LN

ATC71-B TORQUE AND POWER CURVES



Motor code: **COMTC710008**

Power S1: 5.5 Kw (S1) @ 12000 rpm  
 Power S6: 6.6 Kw (S6) @ 12000 rpm  
 Voltage: 380V (option 220V)  
 Poles: 2  
 Max speed: 24000 rpm @ 400 Hz  
 Bearings: Ceramic, front and rear



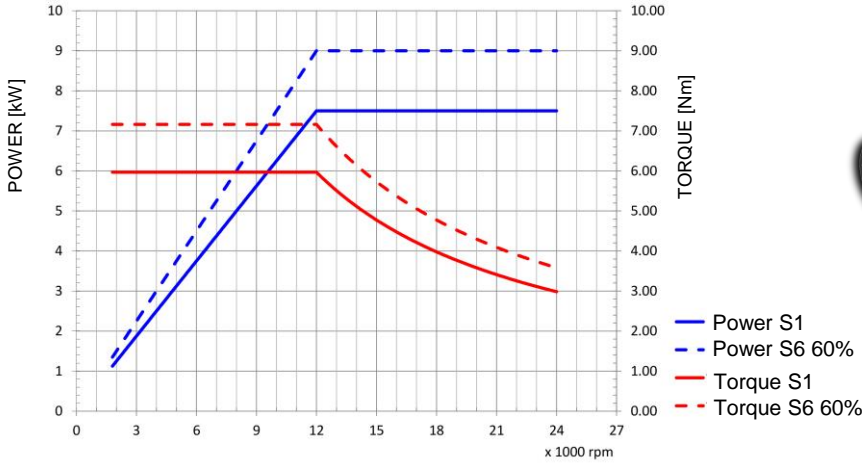
Power [kW]	Duty Cycle	Base speed [rpm]	Base freq. [Hz]	Base voltage Δ [V]	Base voltage Y [V]	Protection	Ins. Cl.
5.5/6.6	S1/S6-60%	12000	200	380	380	IP54	F
Min speed [rpm]	Max speed [rpm]	Max freq. [Hz]	Absorb. Δ [A]	Absorb. Y [A]	Part number on nameplate		
3000	24000	400	11.4/13.4	11.4/13.4	COMTC710008		
Balancing: G2.5 - ISO 1940 @ maximum motor speed		Balancing type	Foot type	Foot type	Peso / weight		
			full key	full key	30.36 kg		
Tolerance non quotati / unlisted tolerances: ±0.5mm Smussi non quotati / unlisted chamfers: +0.5mm							
rev. n°		description		date	signature		
00		Emissione		05/09/2014	D. Bottarel		
drawn - date		approved - date	checked - date	sostituisce il		foglio / sheet	
D. Bottarel - 05/09/2014		S. Peri - 05/09/2014	S. Peri - 05/09/2014	sostituito dal		1 / 1	
Title		Customer		Drawing code		Drawing n°	
ATC71-B-ISO30-LN		Catalogo		COMTC710008		3295	
Teknomotor S.r.l. Via Agnègga 31, I-32038 Quero Vias (BL) www.teknomotor.com		scale		A4			
		1:4					

Power connector	
1	U
2	V
3	W
GND	Ground
A	Fan (L) 220V
B	Thermal protection
C	Thermal protection
D	Fan (N) 220V

Signal connector	
1	S1
2	S2
3	S3 tacho
4	not used
5	S5
6	0 V
7	+24V DC

# ATC71-B-ISO30-LN

ATC71-B TORQUE AND POWER CURVES



Motor code: **COMTC710014**

Power S1: 7.5 Kw (S1) @ 12000 rpm  
 Power S6: 9.0 Kw (S6) @ 12000 rpm  
 Voltage: 380V (option 220V)  
 Poles: 4  
 Max speed: 24000 rpm @ 800 Hz  
 Bearings: Ceramic, front and rear

Technical drawing of the ATC71-B-ISO30-LN motor. It includes a top view, a side view, and a detail of the ISO30 DIN69871 cone. Key features include: Air inlet pressurization (6 bar, Ø8mm), Tool-holder release (6 bar, Ø8mm), Tool-holder hook-up (6 bar, Ø8mm), Centre of gravity, Electric fan, Pneumatic connectors, Power connector, and Signal connector. Dimensions are provided in millimeters.

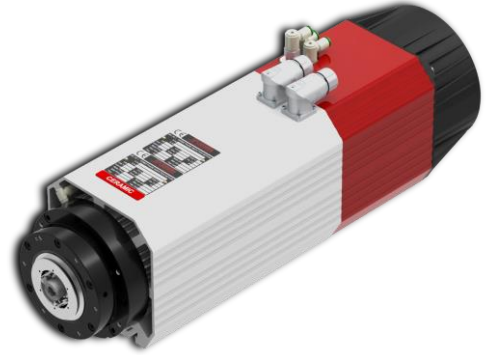
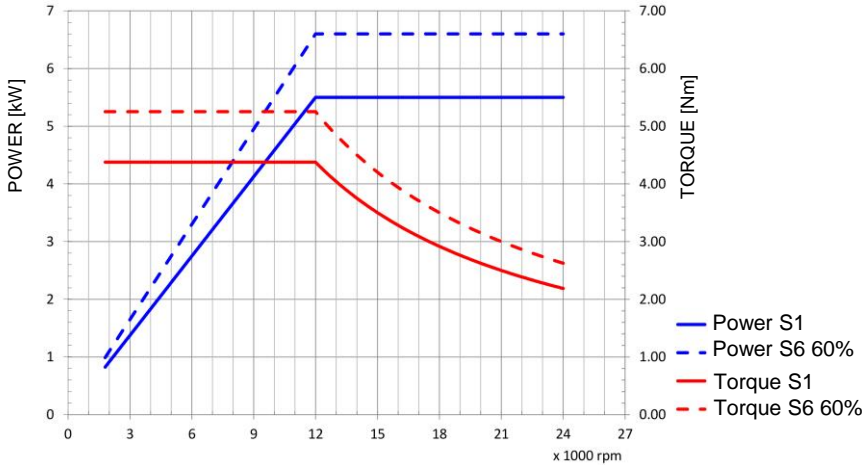
Power connector	Signal connector
1 U	1 S1
2 V	2 S2
3 W	3 S3 tacho
GND Ground	4 not used
A Fan (L) 220V	5 S5
B Thermal protection	6 0 V
C Thermal protection	7 +24V DC
D Fan (N) 220V	

Power [kW]	Duty Cycle	Base speed [rpm]	Base freq. [Hz]	Base voltage Δ [V]	Base voltage Y [V]	Protection	Ins. Cl.
7.5/9.0	S1/S6-60 %	12000	400	380	380	IP54	F
Min speed [rpm]	Max speed [rpm]	Max freq. [Hz]	Absorb. Δ [A]	Absorb. Y [A]	Part number on nameplate		
3000	24000	800	15.7/19.0	15.7/19.0	COMTC710014		
Balancing: G2.5 - ISO 1940 @ maximum motor speed	Balancing type	Foot type	Foot type	Foot type	Peso / weight		
		full key	full key	full key	30.66 kg		
Tolerance non quotata / unlisted tolerances: ±0.5mm Smussi non quotati / unlisted chamfers: +0.5mm							
rev. n°	description	date	signature				
00	Emissione	09/09/2016	D. Bottarel				
drawn - date	approved - date	checked - date	sostituisce il	folgio / sheet	scala		
D. Bottarel - 09/09/2016	S. Peris - 09/09/2016	S. Peris - 09/09/2016	sostituito dal	1 / 1	1:4		

Use only nuts for T-slots. UNI 5531

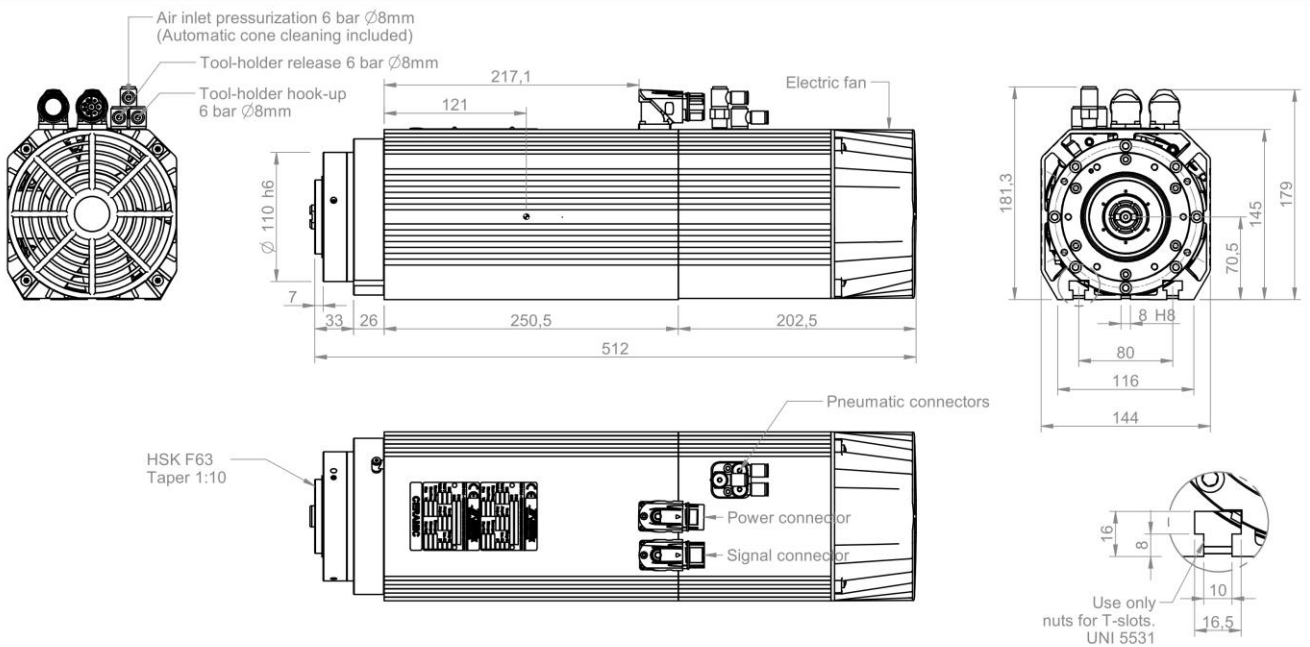
# ATC71-B-HSK63F-SN

ATC71-B TORQUE AND POWER CURVES



Motor code: **COMTC710023**

Power S1: 5.5 Kw (S1) @ 12000 rpm  
 Power S6: 6.6 Kw (S6) @ 12000 rpm  
 Voltage: 380V (option 220V)  
 Poles: 2  
 Max speed: 24000 rpm @ 400 Hz  
 Bearings: Ceramic, front and rear



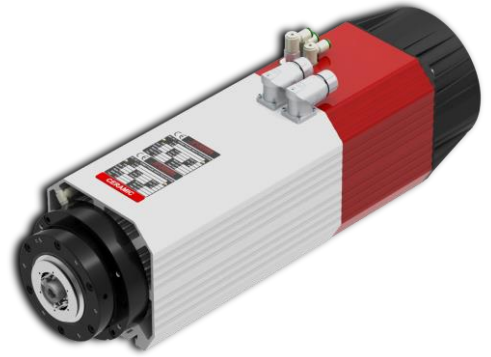
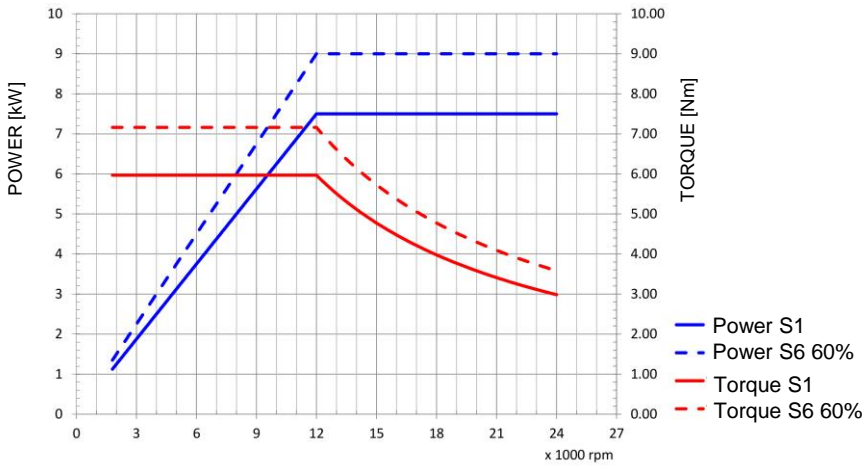
Power connector	
1	U
2	V
3	W
GND	Ground
A	Fan (L) 220V
B	Thermal protection
C	Thermal protection
D	Fan (N) 220V

Signal connector	
1	S1
2	S2
3	S3 tacho
4	S4
5	S5
6	0 V
7	+24V DC

Power [kW]	5.5/6.6	Duty Cycle	S1/S6-60 %	Base speed [rpm]	12000	Base freq. [Hz]	200	Base voltage Δ [V]	380	Protection	IP54	Ins. Cl.	F
Min speed [rpm]	3000	Max speed [rpm]	24000	Max freq. [Hz]	400	Absorb. Δ [A]	11.4/13.4	Part number on nameplate <b>COMTC710023</b>					
Balancing: G2.5 - ISO 1940 @ maximum motor speed				Balancing type				Peso / weight <b>26.50 kg</b>		Title <b>ATC71-B-HSK63F-SN</b>			
Tolerance non quotati / unlisted tolerances: ±0.5mm Smussi non quotati / unlisted chamfers: +0.5mm													
rev. n°	00			Description			Emissione		date	01/02/2017		signature D. Bottarel	
Customer <b>Catalogo</b>													
Drawing code <b>COMTC710023</b>										Drawing n° <b>5063</b>			
drawn - date	approved - date	checked - date	sostituisce il		sostituito dal		foglio / sheet		scale		A4		
D. Bottarel - 01/02/2017	S. Peris - 01/02/2017	S. Peris - 01/02/2017					1 / 1		1:4				

# ATC71-B-HSK63F-SN

ATC71-B TORQUE AND POWER CURVES



Motor code: **COMTC710018**

Power S1: 7.5 Kw (S1) @ 12000 rpm  
 Power S6: 9.0 Kw (S6) @ 12000 rpm  
 Voltage: 380V (option 220V)  
 Poles: 4  
 Max speed: 24000 rpm @ 800 Hz  
 Bearings: Ceramic, front and rear

Air inlet pressurization 6 bar Ø8mm (Automatic cone cleaning included)  
 Tool-holder release 6 bar Ø8mm  
 Tool-holder hook-up 6 bar Ø8mm

181.3  
145  
179  
70.5  
8 H8  
80  
116  
144

217,1  
121  
7  
33  
26  
250,5  
512  
202,5

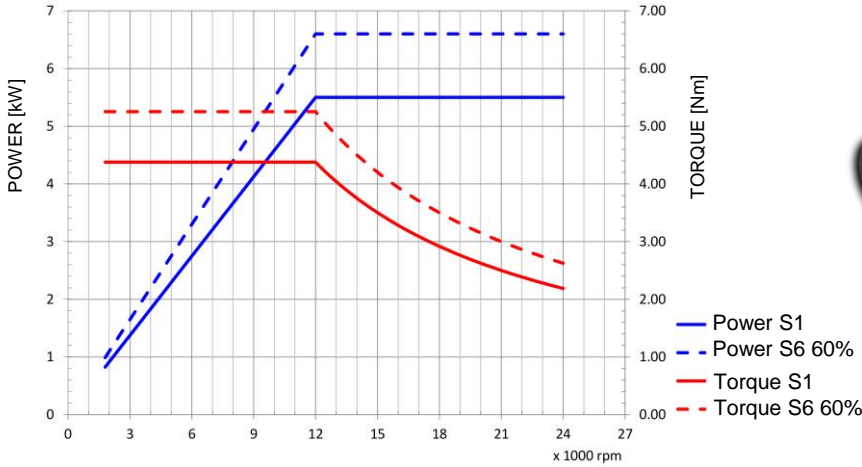
Electric fan  
Pneumatic connectors  
Power connector  
Signal connector  
HSK F63 Taper 1:10

Use only nuts for T-slots. UNI 5531

Power [kW]	Duty Cycle	Base speed [rpm]	Base freq. [Hz]	Base voltage Δ [V]	380	Protection	IP54	Ins. Cl.	F
7.5/9.0	S1/S6-60 %	12000	400	Base voltage Y [V]	15.7/19.0	Part number on nameplate	COMTC710018		
Min speed [rpm]	Max speed [rpm]	Max freq. [Hz]	Absorb. Δ [A]	Absorb. Y [A]	Part number on nameplate				
3000	24000	800	COMTC710018			COMTC710018			
Balancing: G2.5 - ISO 1940 @ maximum motor speed		Balancing type		Foot type	Foot type	Peso / weight			
						26.80 kg			
Tolerance non quotati / unlisted tolerances: ±0.5mm Smussi non quotati / unlisted chamfers: +0.5mm									
rev. n°	description			date	signature		Title		
00	Emissione			12/10/2016	D. Bottarel		ATC71-B-HSK63F-SN-4P		
Customer							Catalogo		
Drawing code							COMTC710018		
Drawing n°							5059		
drawn - date	approved - date	checked - date	sostituisce il		foglio / sheet		scala	A4	
D. Bottarel - 12/10/2016	S. Perli - 12/10/2016	S. Perli - 12/10/2016	sostituito dal		1 / 1		1:4		

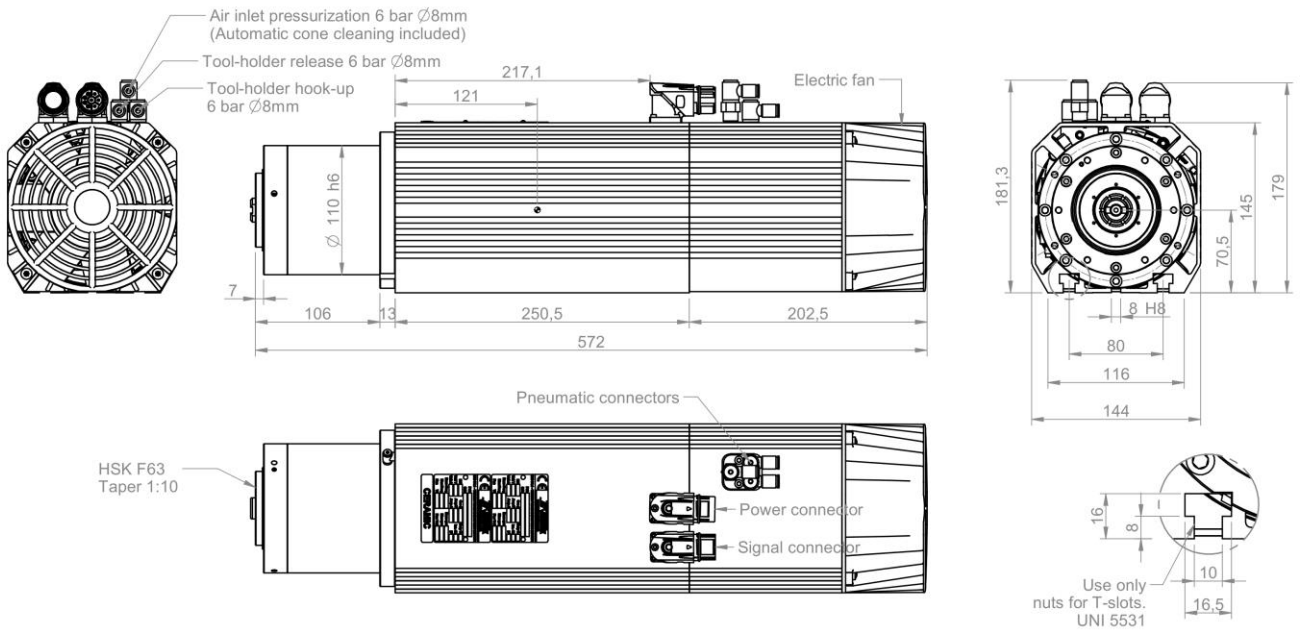
# ATC71-B-HSK63F-LN

ATC71-B TORQUE AND POWER CURVES



Motor code: **COMTC710006**

Power S1: 5.5 Kw (S1) @ 12000 rpm  
 Power S6: 6.6 Kw (S6) @ 12000 rpm  
 Voltage: 380V (option 220V)  
 Poles: 2  
 Max speed: 24000 rpm @ 400 Hz  
 Bearings: Ceramic, front and rear



Power connector	
1	U
2	V
3	W
GND	Ground
A	Fan (L) 220V
B	Thermal protection
C	Thermal protection
D	Fan (N) 220V

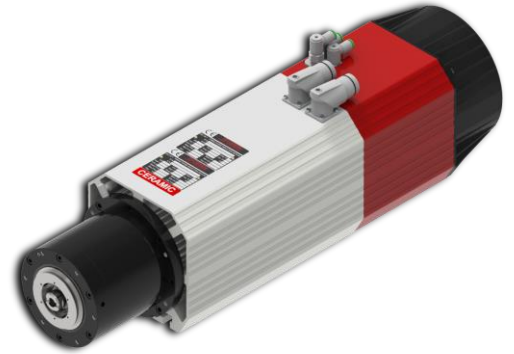
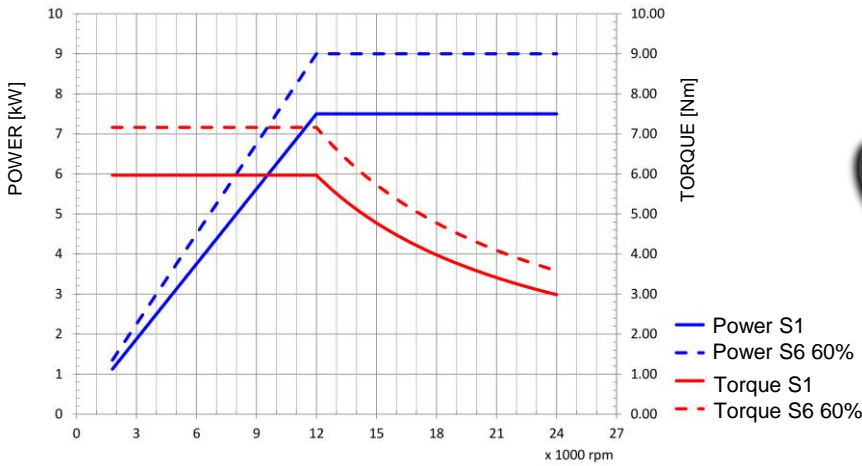
Signal connector	
1	S1
2	S2
3	S3 Iacho
4	S4
5	S5
6	0 V
7	+24V DC

Power [kW]	5.5/6.6	Duty Cycle	S1/S6-60 %	Base speed [rpm]	12000	Base freq. [Hz]	200	Base voltage Δ [V]	380	Protection	IP54	Ins. Cl.	F				
Min speed [rpm]	3000	Max speed [rpm]	24000	Max freq. [Hz]	400	Absorb. Δ [A]	11.4/13.4	Absorb. Y [A]	11.4/13.4	Part number on nameplate	COMTC710006						
Balancing: G2.5 - ISO 1940 @ maximum motor speed				Balancing type				Foot type	Foot key		Peso / weight						
Tolerance non quotati / unlisted tolerances: ±0.5mm				Smussi non quotati / unlisted chamfers: +0.5mm				∇ = 0.8 √	∇ = 3.2 √	∇ = 12.5 √	∇ = √	30.45 kg					
Title												ATC71-B-HSK63F-LN					
rev. n° / description												date		signature		Customer	
00 / Emissione												05/09/2014		D. Bottarel		Catalogo	
Drawing code												COMTC710006		Drawing n°		3292	
drawn - date				approved - date		checked - date		sostituisce il		foglio / sheet		scala					
D. Bottarel - 05/09/2014				S. Peris - 05/09/2014		S. Peris - 05/09/2014		sostituito dal		1 / 1		1:4					
Il presente disegno è di proprietà esclusiva di Teknomotor S.r.l. La riproduzione totale o parziale o la divulgazione a terzi, senza nostro esplicito consenso scritto, verrà perseguita secondo i termini di legge in vigore.																	



# ATC71-B-HSK63F-LN

ATC71-B TORQUE AND POWER CURVES



Motor code: **COMTC710015**

Power S1: 7.5 Kw (S1) @ 12000 rpm  
 Power S6: 9.0 Kw (S6) @ 12000 rpm  
 Voltage: 380V (option 220V)  
 Poles: 4  
 Max speed: 24000 rpm @ 800 Hz  
 Bearings: Ceramic, front and rear

Air inlet pressurization 6 bar Ø8mm (Automatic cone cleaning included)

Tool-holder release 6 bar Ø8mm

Tool-holder hook-up 6 bar Ø8mm

Electric fan

HSK F63 Taper 1:10

Dimensions: 121, 217.1, 110 h6, 7, 106, 13, 250.5, 202.5, 572, 181.3, 70.5, 145, 179, 8 H8, 80, 116, 144, 16, 8, 10, 16.5

Pneumatic connectors

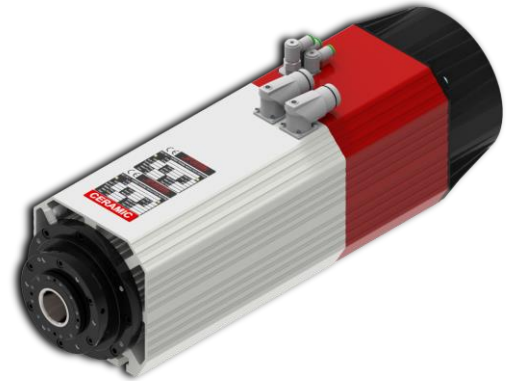
Power connector

Signal connector

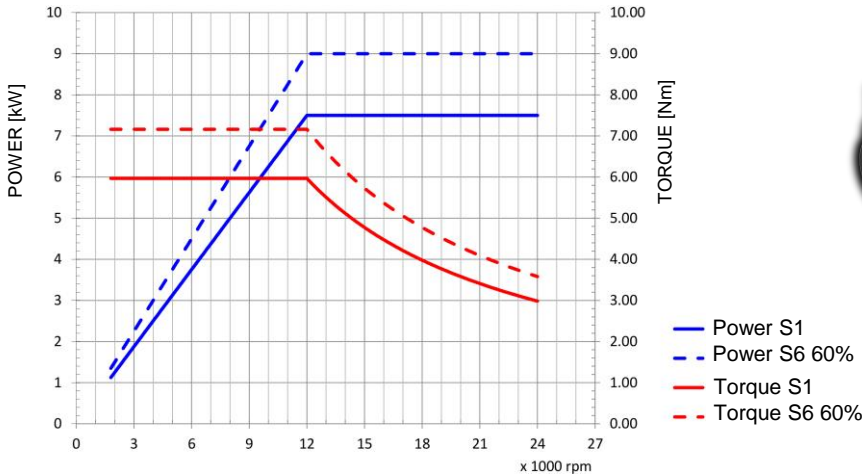
Use only nuts for T-slots. UNI 5531

Power [kW]	Duty Cycle	Base speed [rpm]	Base freq. [Hz]	Base voltage Δ [V]	Base voltage Y [V]	Protection	Ins. Cl.
7.5/9.0	S1/S6-60 %	12000	400	380	380	IP54	F
Min speed [rpm]	Max speed [rpm]	Max freq. [Hz]	Absorb. Δ [A]	Absorb. Y [A]	Part number on nameplate		
3000	24000	800	15.7/19.0	15.7/19.0	COMTC710015		
Balancing: G2.5 - ISO 1940 @ maximum motor speed		Balancing type	Foot type	Foot type	Peso / weight		
			full key	full key	30.76 kg		
Tolerance non quotati / unlisted tolerances: ±0.5mm Smussi non quotati / unlisted chamfers: +0.5mm							
rev. n°		description		date	signature		
00		Emissione		15/09/2016	D. Bottarel		
drawn - date				approved - date	checked - date	sostituisce il	
D. Bottarel - 15/09/2016				S. Perli - 15/09/2016	S. Perli - 15/09/2016	sostituito dal	
Title				Customer			
ATC71-B-HSK63F-LN-4P				Catalogo			
Drawing code				Drawing n°			
COMTC710015				3291			
foglio / sheet		scala		A4			
1 / 1		1:4					

# ATC71-C-ISO30-SN



ATC71-C TORQUE AND POWER CURVES



Motor code: **COMTC710003**

Power S1: 7.5 Kw (S1) @ 12000 rpm  
 Power S6: 9.0 Kw (S6) @ 12000 rpm  
 Voltage: 380V (option 220V)  
 Poles: 2  
 Max speed: 24000 rpm @ 400 Hz  
 Bearings: Ceramic, front and rear

Tool-holder release 6 bar Ø8mm

Pressurization 6 bar Ø8mm (Automatic cone cleaning included)

Tool-holder hook-up 6 bar Ø8mm

Use only nuts for T-slots. UNI 5531

Power [kW]	7.5/9.0	Duty Cycle	S1/S6-60 %	Base speed [rpm]	12000	Base freq. [Hz]	200	Base voltage Δ [V]	380	Protection	IP54	Ins. Cl.	F										
Min speed [rpm]	3000	Max speed [rpm]	24000	Max freq. [Hz]	400	Absorb. Δ [A]	16.0/19.2	Absorb. Y [A]	16.0/19.2	Part number on nameplate	COMTC710003												
Balancing: G2.5 - ISO 1940 @ maximum motor speed				Balancing type				Foot type	Foot type	Peso / weight		26.47 kg											
Tolerance non quotata / unlisted tolerances: ±0.5mm Smussi non quotati / unlisted chamfers: +0.5mm												Title		ATC71-C-ISO30-SN									
rev. n° 00										description		Emissione		date		05/09/2014		signature		D. Bottarel			
drawn - date										approved - date		checked - date		sostituisce il		foglio / sheet		1 / 1		scala		1:4	
D. Bottarel - 05/09/2014										S. Peri - 05/09/2014		S. Peri - 05/09/2014		sostituito dal		COMTC710003		Drawing n°		2675			

Power connector	
1	U
2	V
3	W
GND	Ground
A	Fan (L) 220V
B	Thermal protection
C	Thermal protection
D	Fan (N) 220V

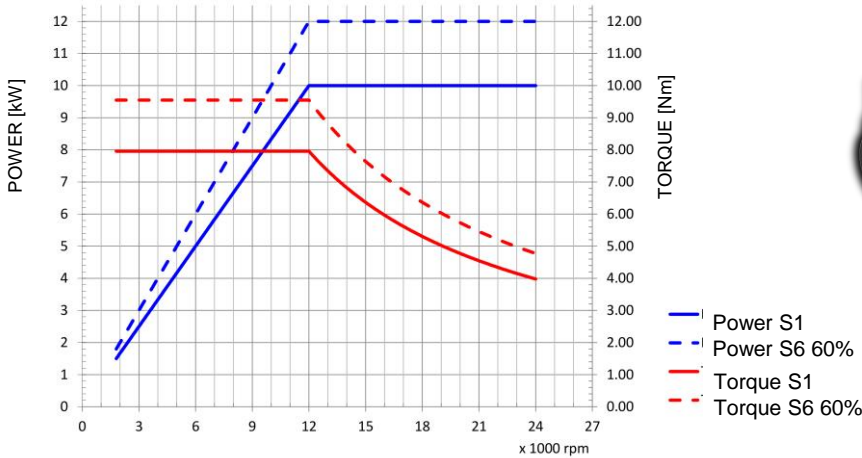
Signal connector	
1	S1
2	S2
3	S3 tacho
4	not used
5	S5
6	0 V
7	+24V DC

Teknomotor S.r.l.  
Via Agnègga 31, I-32038 Quero Vias (BL)  
www.teknomotor.com

# ATC71-C-ISO30-SN



ATC71-C TORQUE AND POWER CURVES



Motor code: **COMTC710024**

Power S1: 10.0 Kw (S1) @ 12000 rpm  
 Power S6: 12.0 Kw (S6) @ 12000 rpm  
 Voltage: 380V (option 220V)  
 Poles: 4  
 Max speed: 24000 rpm @ 800 Hz  
 Bearings: Ceramic, front and rear

Tool-holder release 6 bar Ø8mm

Pressurization 6 bar Ø8mm (Automatic cone cleaning included)

Tool-holder hook-up 6 bar Ø8mm

ISO30 DIN69871 cone Taper 7/24

Teknomotor pull-stud

Pneumatic connectors

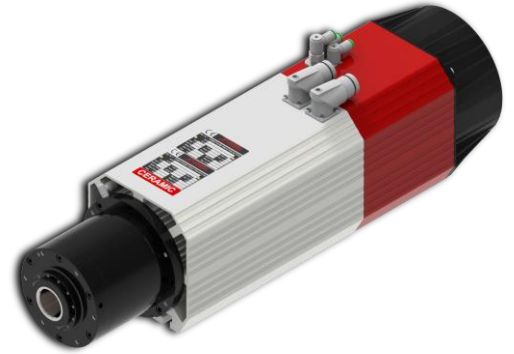
Power connector

Signal connector

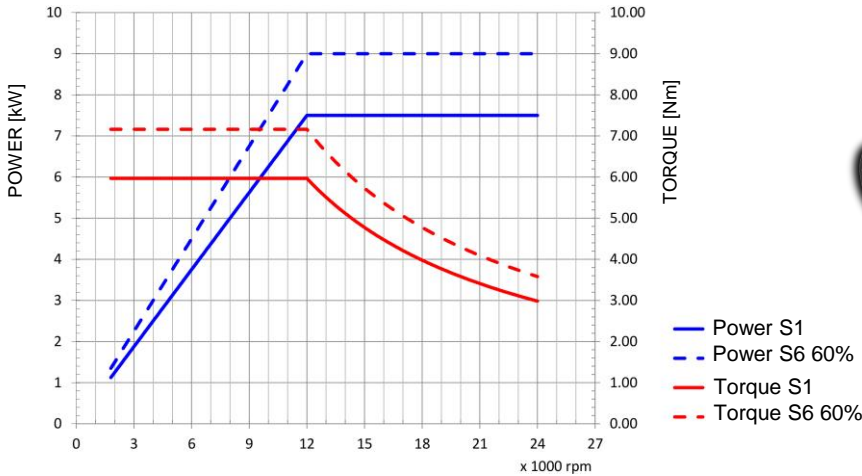
Use only nuts for T-slots. UNI 5531

Power [kW]	Duty Cycle	Base speed [rpm]	Base freq. [Hz]	Base voltage Δ [V]	Base voltage Y [V]	Protection	Ins. Cl.
10.0/12.0	S1/S6-60 %	12000	400	380	380	IP54	F
Min speed [rpm]		Max speed [rpm]	Max freq. [Hz]	Absorb. Δ [A]	Absorb. Y [A]	Part number on nameplate	
3000		24000	800	20.0/24.0	20.0/24.0	COMTC710024	
Balancing: G2.5 - ISO 1940 @ maximum motor speed			Balancing type	Foot type	Foot type	Peso / weight	
				full key	full key	25.13 kg	
Tolerance non quotata / unlisted tolerances: ±0.5mm Smussi non quotati / unlisted chamfers: +0.5mm							
rev. n°				date		signature	
00				01/02/2017		D. Bottarel	
Description							
Emissione							
drawn - date				approved - date		checked - date	
D. Bottarel - 01/02/2017				S. Peris - 01/02/2017		S. Peris - 01/02/2017	
sostituisce il				sostituito dal			
Title						Customer	
ATC71-C-ISO30-SN-4P						Catalogo	
Drawing code						Drawing n°	
COMTC710024						5064	
foglio / sheet				scala		A4	
1 / 1				1:4			

# ATC71-C-ISO30-LN



ATC71-C TORQUE AND POWER CURVES



Motor code: **COMTC710009**

Power S1: 7.5 Kw (S1) @ 12000 rpm  
 Power S6: 9.0 Kw (S6) @ 12000 rpm  
 Voltage: 380V (option 220V)  
 Poles: 2  
 Max speed: 24000 rpm @ 400 Hz  
 Bearings: Ceramic, front and rear

Air inlet pressurization 6 bar Ø8mm (Automatic cone cleaning included)  
 Tool-holder release 6 bar Ø8mm  
 Tool-holder hook-up 6 bar Ø8mm  
 Electric fan  
 Pneumatic connectors  
 Power connector  
 Signal connector

ISO30 DIN69871 cone Taper 7/24  
 Teknomotor pull-stud  
 Use only nuts for T-slots. UNI 5531

Power [kW]	7.5/9.0	Duty Cycle	S1/S6-60 %	Base speed [rpm]	12000	Base freq. [Hz]	200	Base voltage Δ [V]	380	Protection	IP54	Ins. Cl.	F						
Min speed [rpm]	3000	Max speed [rpm]	24000	Max freq. [Hz]	400	Absorb. Δ [A]	16.0/19.2	Absorb. Y [A]	16.0/19.2	Part number on nameplate	COMTC710009								
Balancing	G2.5 - ISO 1940 @ maximum motor speed		Balancing type			Foot type		Foot type		Peso / weight	32.00 kg								
Tolerance non quotate / unlisted tolerances: ±0.5mm Smussi non quotati / unlisted chamfers: +0.5mm																			
rev. n°	00		description		Emissione		date	05/09/2014		signature	D. Bottarel								
drawn - date										approved - date		checked - date		sostituisce il		foglio / sheet		scala	
D. Bottarel - 05/09/2014										S. Peris - 05/09/2014		S. Peris - 05/09/2014		sostituito dal		1 / 1		1:4	
Il presente disegno è di proprietà esclusiva di Teknomotor S.r.l. La riproduzione totale o parziale o la divulgazione a terzi, senza nostro esplicito consenso scritto, verrà perseguito secondo i termini di legge in vigore.																			

1	U
2	V
3	W
GND	Ground
A	Fan (L) 220V
B	Thermal protection
C	Thermal protection
D	Fan (N) 220V

1	S1
2	S2
3	S3 tacho
4	not used
5	S5
6	0 V
7	+24V DC

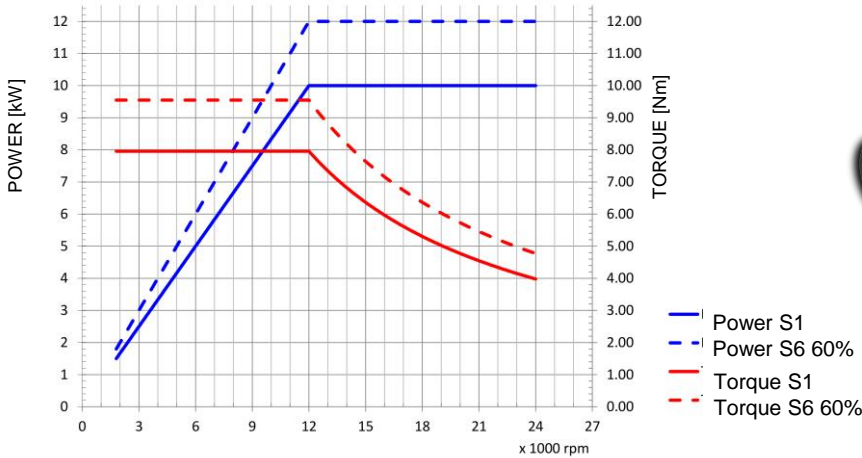
**TEKNOMOTOR**  
 Teknomotor S.r.l.  
 Via Agnègga 31, I-32038 Quero Vias (BL)  
 www.teknomotor.com

Title: **ATC71-C-ISO30-LN**  
 Customer: **Catalogo**  
 Drawing code: **COMTC710009**  
 Drawing n°: **3296**

# ATC71-C-ISO30-LN



ATC71-C TORQUE AND POWER CURVES



Motor code: **COMTC710025**

Power S1: 10.0 Kw (S1) @ 12000 rpm  
 Power S6: 12.0 Kw (S6) @ 12000 rpm  
 Voltage: 380V (option 220V)  
 Poles: 4  
 Max speed: 24000 rpm @ 800 Hz  
 Bearings: Ceramic, front and rear

Power [kW]	Duty Cycle	Base speed [rpm]	Base freq. [Hz]	Base voltage Δ [V]	Base voltage Y [V]	Protection	Ins. Cl.
10.0/12.0	S1/S6-60%	12000	400	380	380	IP54	F
Min speed [rpm]	Max speed [rpm]	Max freq. [Hz]	Absorb. Δ [A]	Absorb. Y [A]	Part number on nameplate		
3000	24000	800	20.0/24.0	20.0/24.0	COMTC710025		
Balancing: G2.5 - ISO 1940 @ maximum motor speed	Balancing type	Foot type	Foot type	Foot type	Peso / weight		
		full key	full key	full key	30.66 kg		
Tolerance non quotati / unlisted tolerances: ±0.5mm Smussi non quotati / unlisted chamfers: +0.5mm							
rev. n°	description	date	signature				
00	Emissione	01/02/2017	D. Bottarel				
drawn - date	approved - date	checked - date	sostituisce il	folgio / sheet	scala		
D. Bottarel - 01/02/2017	S. Peris - 01/02/2017	S. Peris - 01/02/2017	sostituito dal	1 / 1	1:4		

Power connector	
1	U
2	V
3	W
GND	Ground
A	Fan (L) 220V
B	Thermal protection
C	Thermal protection
D	Fan (N) 220V

Signal connector	
1	S1
2	S2
3	S3 tacho
4	not used
5	S5
6	0 V
7	+24V DC

**TEKNOMOTOR**

Teknomotor S.r.l.  
Via Agneggia 31, I-32038 Quero Vias (BL)  
www.teknomotor.com

Title: **ATC71-C-ISO30-LN-4P**

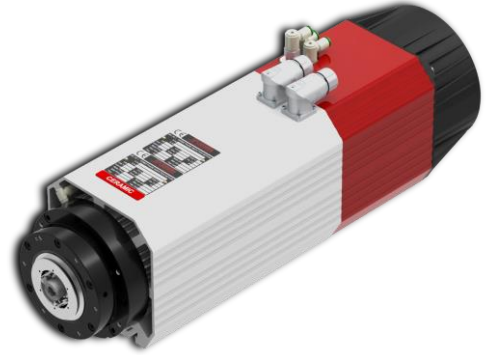
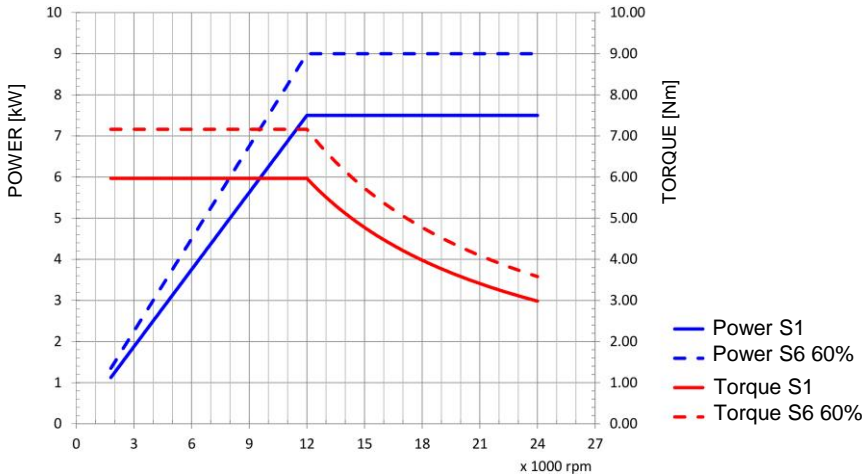
Customer: **Catalogo**

Drawing code: **COMTC710025**

Drawing n°: **5065**

# ATC71-C-HSK63F-SN

ATC71-C TORQUE AND POWER CURVES



Motor code: **COMTC710028**

Power S1: 7.5 Kw (S1) @ 12000 rpm  
 Power S6: 9.0 Kw (S6) @ 12000 rpm  
 Voltage: 380V (option 220V)  
 Poles: 2  
 Max speed: 24000 rpm @ 400 Hz  
 Bearings: Ceramic, front and rear

Air inlet pressurization 6 bar Ø8mm  
(Automatic cone cleaning included)

Tool-holder release 6 bar Ø8mm

Tool-holder hook-up 6 bar Ø8mm

Electric fan

Pneumatic connectors

Power connector

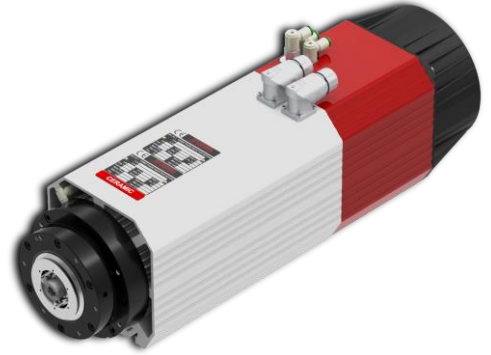
Signal connector

HSK F63 Taper 1:10

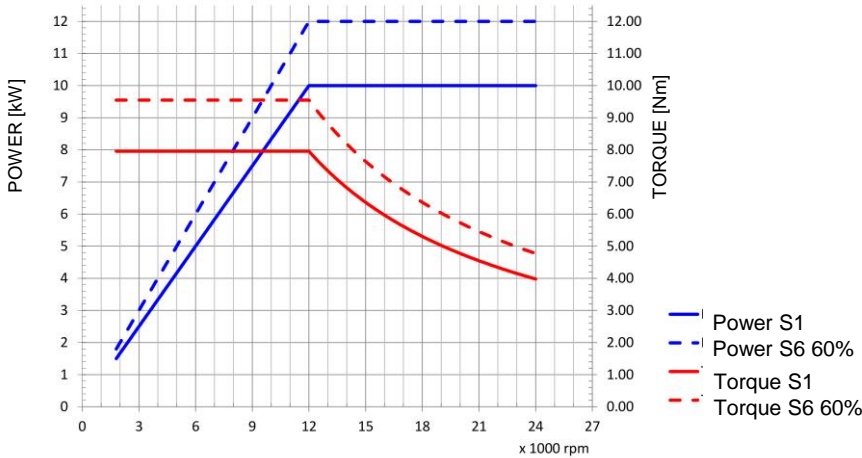
Use only nuts for T-slots. UNI 5531

Power [kW]	Duty Cycle	Base speed [rpm]	Base freq. [Hz]	Base voltage Δ [V]	Base voltage Y [V]	Protection	Ins. Cl.
7.5-9.0	S1/S6-60 %	12000	200	380	380	IP54	F
Min speed [rpm]	Max speed [rpm]	Max freq. [Hz]	Absorb. Δ [A]	Absorb. Y [A]	Part number on nameplate		
3000	24000	400	16.0/19.2	16.0/19.2	COMTC710028		
Balancing: G2.5 - ISO 1940 @ maximum motor speed		Balancing type		Foot type		Peso / weight	
						28.14 kg	
Tolerance non quotati / unlisted tolerances: ±0.5mm Smussi non quotati / unlisted chamfers: +0.5mm							
rev. n°	description			date	signature		
00	Emissione			01/02/2017	D. Bottarel		
drawn - date				approved - date	checked - date	sostituisce il	
D. Bottarel - 01/02/2017				S. Peris - 01/02/2017	S. Peris - 01/02/2017	sostituito dal	
Title						Customer	
ATC71-C-HSK63F-SN						Catalogo	
Drawing code						Drawing n°	
COMTC710028						5068	
foglio / sheet				scale	A4		
1 / 1				1:4			

# ATC71-C-HSK63F-SN



ATC71-C TORQUE AND POWER CURVES



Motor code: **COMTC710026**

Power S1: 10.0 Kw (S1) @ 12000 rpm  
 Power S6: 12.0 Kw (S6) @ 12000 rpm  
 Voltage: 380V (option 220V)  
 Poles: 4  
 Max speed: 24000 rpm @ 800 Hz  
 Bearings: Ceramic, front and rear

Air inlet pressurization 6 bar Ø8mm (Automatic cone cleaning included)

Tool-holder release 6 bar Ø8mm

Tool-holder hook-up 6 bar Ø8mm

Electric fan

HSK F63 Taper 1:10

Pneumatic connectors

Power connector

Signal connector

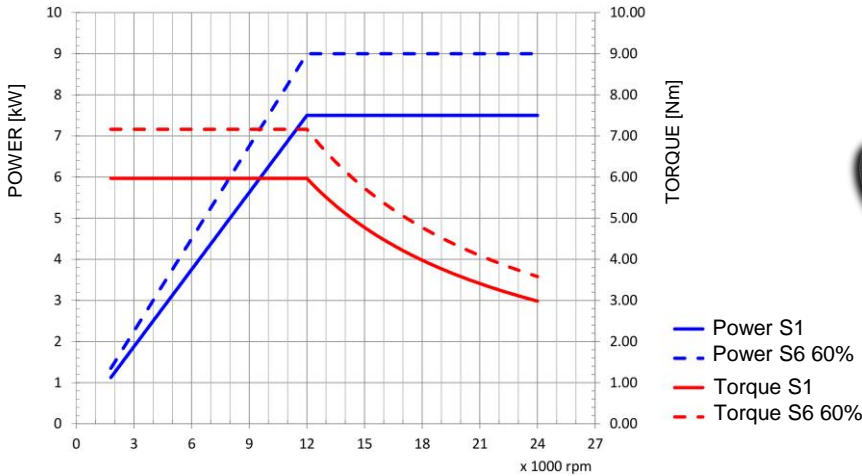
Use only nuts for T-slots. UNI 5531

Power [kW]	Duty Cycle	Base speed [rpm]	Base freq. [Hz]	Base voltage Δ [V]	Base voltage Y [V]	Protection	Ins. Cl.
10.0/12.0	S1/S6-60%	12000	400	380	380	IP54	F
Min speed [rpm]	Max speed [rpm]	Max freq. [Hz]	Absorb. Δ [A]	Absorb. Y [A]	Part number on nameplate		
3000	24000	800	20.0/24.0	20.0/24.0	COMTC710026		
Balancing: G2.5 - ISO 1940 @ maximum motor speed		Balancing type	Foot type	Foot type	Peso / weight		
			full key	full key	26.80 kg		
Tolerance non quotati / unlisted tolerances: ±0.5mm Smussi non quotati / unlisted chamfers: +0.5mm							
rev. n°	description	date	signature	Title			
00	Emissione	01/02/2017	D. Bottarel	ATC71-C-HSK63F-SN-4P			
Customer				Catalogo			
Drawing code				COMTC710026			
Drawing n°				5066			
drawn - date	approved - date	checked - date	sostituisce il	foglio / sheet	scala	A4	
D. Bottarel - 01/02/2017	S. Peris - 01/02/2017	S. Peris - 01/02/2017	sostituito dal	1 / 1	1:4		

# ATC71-C-HSK63F-LN

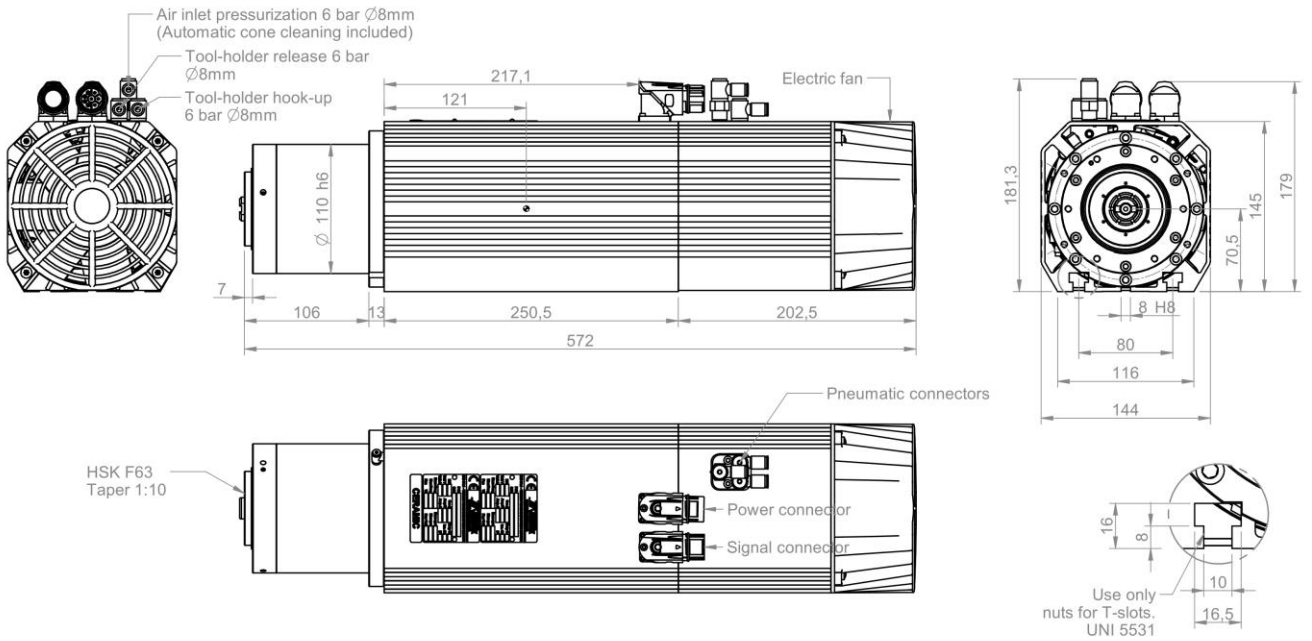


ATC71-C TORQUE AND POWER CURVES



Motor code: **COMTC710005**

Power S1: 7.5 Kw (S1) @ 12000 rpm  
 Power S6: 9.0 Kw (S6) @ 12000 rpm  
 Voltage: 380V (option 220V)  
 Poles: 2  
 Max speed: 24000 rpm @ 400 Hz  
 Bearings: Ceramic, front and rear



Power connector	
1	U
2	V
3	W
GND	Ground
A	Fan (L) 220V
B	Thermal protection
C	Thermal protection
D	Fan (N) 220V

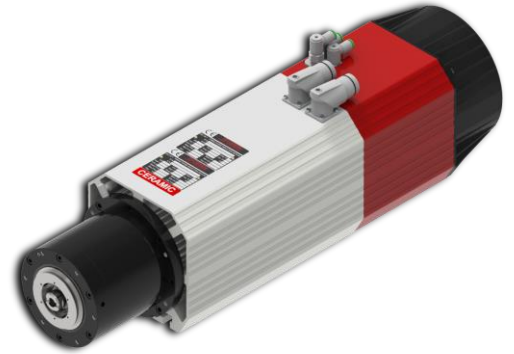
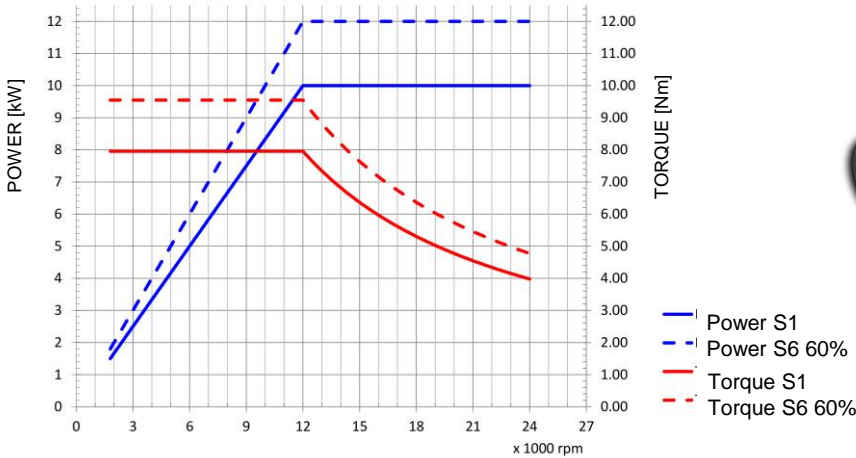
Signal connector	
1	S1
2	S2
3	S3 tacho
4	S4
5	S5
6	0 V
7	+24V DC

Power [kW]	7.5/9.0	Duty Cycle	S1/S6-60 %	Base speed [rpm]	12000	Base freq. [Hz]	200	Base voltage Δ [V]	380	Protection	IP54	Ins. Cl.	F
Min speed [rpm]	3000	Max speed [rpm]	24000	Max freq. [Hz]	400	Absorb. Δ [A]	16.0/19.2	Part number on nameplate <b>COMTC710005</b>					
Balancing: G2.5 - ISO 1940 @ maximum motor speed				Balancing type		Foot type	Foot key	Peso / weight		32.10 kg			
Tolerance non quotati / unlisted tolerances: ±0.5mm Smussi non quotati / unlisted chamfers: +0.5mm													
rev. n°	description		date		signature		Title						
00	Emissione		05/09/2014		D. Bottarel		ATC71-C-HSK63F-LN						
Customer							Catalogo						
Drawing code							COMTC710005						
Drawing n°							3291						
drawn - date	approved - date	checked - date	sostituisce il		foglio / sheet		scala		A4				
D. Bottarel - 05/09/2014	S. Peris - 05/09/2014	S. Peris - 05/09/2014	sostituito dal		1 / 1		1:4						



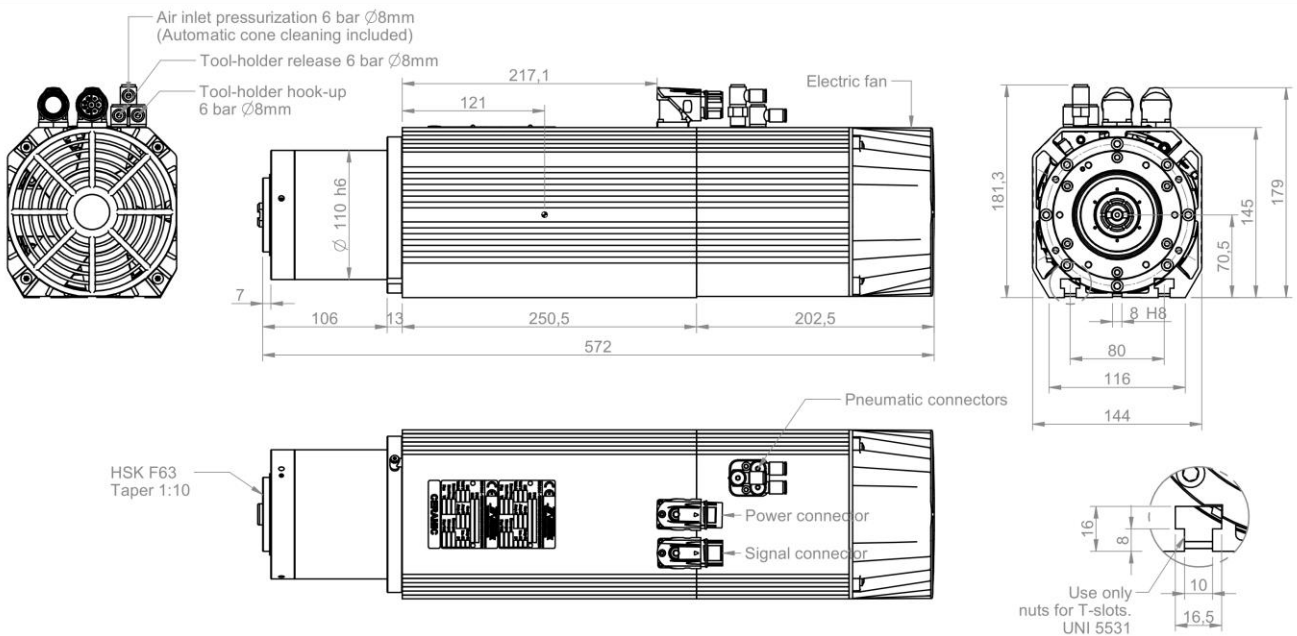
# ATC71-C-HSK63F-LN

ATC71-C TORQUE AND POWER CURVES



Motor code: **COMTC710027**

Power S1: 10.0 Kw (S1) @ 12000 rpm  
 Power S6: 12.0 Kw (S6) @ 12000 rpm  
 Voltage: 380V (option 220V)  
 Poles: 4  
 Max speed: 24000 rpm @ 800 Hz  
 Bearings: Ceramic, front and rear



Power connector	
1	U
2	V
3	W
GND	Ground
A	Fan (L) 220V
B	Thermal protection
C	Thermal protection
D	Fan (N) 220V

Signal connector	
1	S1
2	S2
3	S3 tacho
4	S4
5	S5
6	0 V
7	+24V DC

Power [kW]	Duty Cycle	Base speed [rpm]	Base freq. [Hz]	Base voltage Δ [V]	Base voltage Y [V]	Protection	Ins. Cl.
10.0/12.0 S1/S6-60%		12000	400		380	IP54	F
Min speed [rpm]	Max speed [rpm]	Max freq. [Hz]	Absorb. Δ [A]	Absorb. Y [A]	Part number on nameplate		
3000	24000	800		20.0/24.0	COMTC710027		
Balancing: G2.5 - ISO 1940 @ maximum motor speed	Balancing type	Foot type	Foot type full key	Foot type	Foot type full key	Peso / weight	
						30.76 kg	

Tolerance non quotati / unlisted tolerances: ±0.5mm		Smussi non quotati / unlisted chamfers: +0.5mm		Title	
rev. n°		description		date	
00		Emissione		01/02/2017	
signature		D. Bottarel		Customer	
				Catalogo	
drawing code		COMTC710027		Drawing n°	
				5067	

drawn - date	approved - date	checked - date	sostituisce il	folgio / sheet	scala	
D. Bottarel - 01/02/2017	S. Peris - 01/02/2017	S. Peris - 01/02/2017	sostituito dal	1 / 1	1:4	

Il presente disegno è di proprietà esclusiva di Teknomotor S.r.l. La riproduzione totale o parziale o la divulgazione a terzi, senza nostro esplicito consenso scritto, verrà perseguito secondo i termini di legge in vigore.

**CABLE SETS**

The connection cables provided by Teknomotor for its ATC are in **mobile lying, shielded** and **oil-proof** (PUR). All the wires are numbered and complete of insulated end ferrules. Moreover, the connectors are wired by professional companies, which ensure the compliance through testing. Teknomotor can even provide the connector with the PINs to wire, but do not recommend it.

I cavi di collegamento forniti da Teknomotor per i propri ATC sono in **posa mobile**, sono **schermati** e **resistenti all'olio** (PUR). Tutti i fili sono numerati e dotati di puntalini isolati. I connettori sono inoltre cablati da aziende specializzate, che ne garantiscono la conformità tramite collaudo. Teknomotor può anche fornire il connettore completo di PIN da cablare, ma lo sconsigliamo.

Die von Teknomotor mitgelieferten Verbindungskabel für die eigenen ATC werden **mobil verlegt**, sind **geschirmt** und **ölbeständig** (PUR). Alle Drähte sind durchnummeriert und mit isolierten Spitzen versehen. Die Verbinder wurden zudem von Fachbetrieben verkabelt, die durch Abnahme die Konformität zusichern. Teknomotor kann den Verbinder auch mit zu verkabelndem PIN anliefern, es ist jedoch nicht ratsam.

SIGNAL CONNECTOR WIRING TABLE		
SIGNAL CONNECTOR PIN	COLOR WIRE	CABLE TYPE
1	Green	<b>3x(2x0.14) + 2x0.50 SHIELDED GREEN CABLE</b>
2	Yellow	
3	Grey	
4	Blue	
5	Pink	
6	White (0V)	
7	Brown (+24V DC)	
8	Red	
Frame connector	Cable shield	



**MAX CURRENT: 24A**

POWER CONNECTOR WIRING TABLE		
POWER CONNECTOR PIN	COLOR WIRE	CABLE TYPE
2	Yellow / Green ⊥	<b>4G2.5 + 2x(2x1) SHIELDED ORANGE CABLE</b>
1	U	
2	V	
3	W	
Frame connector	Cable shield	
A	5	
B	6	
C	7	
D	8	

CABLE SET LENGTHS AVAILABLE [m]	ORDERING CODE
2	CAS0001
5	CAS0002
10	CAS0003
15	CAS0004
20	CAS0005

**TOOL HOLDERS – PORTAUTENSILI – WERKZEUGTRÄGER**

The tool holders are provided by Teknomotor only on demand.

The ISO 30 toolholders are supplied complete with pull stud and balanced nut. The HSK 63F toolholders are supplied complete with balanced nut.

I portautensili vengono forniti da Teknomotor solo su richiesta.

I portautensili ISO 30 vengono forniti completi di codolo e ghiera equilibrata.

I portautensili HSK 63F vengono forniti completi di ghiera equilibrata.

Die Werkzeugträger werden nur auf Anfrage von Teknomotor geliefert.

Die Werkzeugträger ISO 30 werden mit Einspannzapfen und ausgewuchtetem Schraubstock angeliefert.

Die Werkzeugträger HSK 63F werden mit ausgewuchtetem Schraubstock angeliefert.



TOOLHOLDER TYPES	THREAD DIMENSION	TAPER	ORDERING CODE	RENDER VIEW
<b>ISO 30</b>	M40 x 1.5	ER 32	TOH0105A	
<b>HSK 63F</b>	M40 x 1.5	ER 32	TOH0205A	
<b>PULL STUD</b> for ISO 30 tool holder	M12	-	TOH0151A	
<b>NUT GTS32</b>	M40 x 1.5	ER32	GHS0205RA	
<b>COLLETS ER32</b>	-	ER32	<b>PIN05&lt;XX&gt;00E</b> Where <b>XX</b> is the internal diameter of the collet [mm]	

**FORKS**

The forks for toolholders supplied by Teknomotor are made of ABS, a very lightweight, elastic and resistant thermoplastic polymer.

Le forks per portautensili fornite da Teknomotor sono realizzate in ABS, un polimero termoplastico estremamente leggero, elastico e resistente.

Die von Teknomotor unsere Werkzeugklammern sind aus ABS, ein thermoplastisch Polymer extem leicht, elastisch und resistant.

FORK TYPE	ORDERING CODE	RENDER VIEW
ISO30	TOH0181A	
HSK63F	TOH0281A	

**INVERTERS**

The three phases inverters are suitable for every industrial application. They work with three phases line voltage of 380-400 V.

Gli inverter trifase sono adatti per ogni applicazione industriale. Funzionano con tensione di rete 380-400 V trifase.

Die Dreiphasen-Inverter sind für industrielle Einsätze geeignet. Sie werden mit einer dreiphasigen Netzspannung von 380-400V betrieben.



TEKNOMOTOR ORDERING CODE	TECHNICAL DATA				SPINDLE TYPES	
	Power [kVA]	Current [A]	Freq. [Hz]	T <sub>MAX</sub> [°C]	2 poles	4 poles
INV011207	5.5	14.3	50	50	COMTC710001 COMTC710007	-
INV011208	7.5	17.0	50	50	COMTC710004 COMTC710006 COMTC710008 COMTC710023	-
INV011209	11.0	27.7	50	50	COMTC710003 COMTC710005 COMTC710009 COMTC710028	-
INV022109	11.0	16.0	50		-	COMTC710020 COMTC710021 COMTC710023
INV022110	15.0	21.5	50		-	COMTC710014 COMTC710015 COMTC710018 COMTC710022
INV022112	22.0	30.0	50		-	COMTC710024 COMTC710025 COMTC710026 COMTC710027

## ATC71 CATALOGUE REVISION TABLE

<b>Doc. Code</b>	<b>Rev. n°</b>	<b>Rev. Date</b>	<b>Rev. Description</b>	<b>Rev. Author</b>
DOC.C.003	00	28/02/2017	1 <sup>st</sup> Emission	E. Gaspari



**TEKNOMOTOR s.r.l.**

**Via Argenega, 31 – 32038 Quero Vas (BL) ITALY**

**tel. +39 0439 787950 – fax. +39 0439 780147**

**Partita IVA 00929130250**

[info@teknomotor.com](mailto:info@teknomotor.com)

[www.teknomotor.com](http://www.teknomotor.com)

**AZIENDA CON SISTEMA  
DI GESTIONE QUALITÀ  
CERTIFICATO DA DNV GL  
= ISO 9001 =**