

STAINLESS STEEL
LINEAR GUIDEWAY
M Series



HIWIN Support

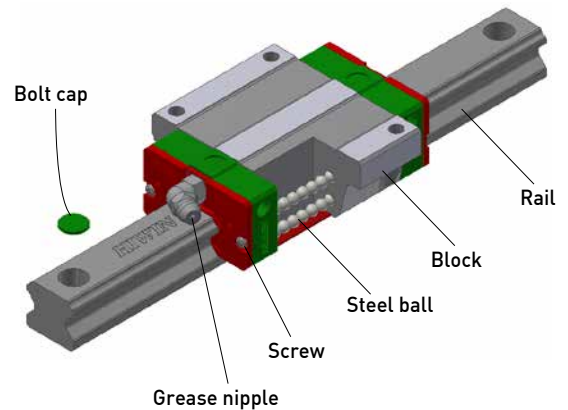


About HIWIN

Stainless Steel Linear Guideway






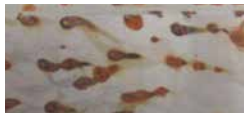
Features /

- **Suitable for specific extreme environments**
 - With metallic components, it can be used in low and medium vacuum environments
- **Great corrosion resistance**
 - Block, Rail, Steel Balls, Grease Nipple, Screws are all made of stainless steel material
- **Same performance as HIWIN's standard steel linear guideway**
 - Stiffness, Hardness, Service Life, Dimensions remain the same



Main Applications /

- Food industry
- Machine tool
- Semiconductor industry
- Measuring instrument
- Medical industry
- Automation industry

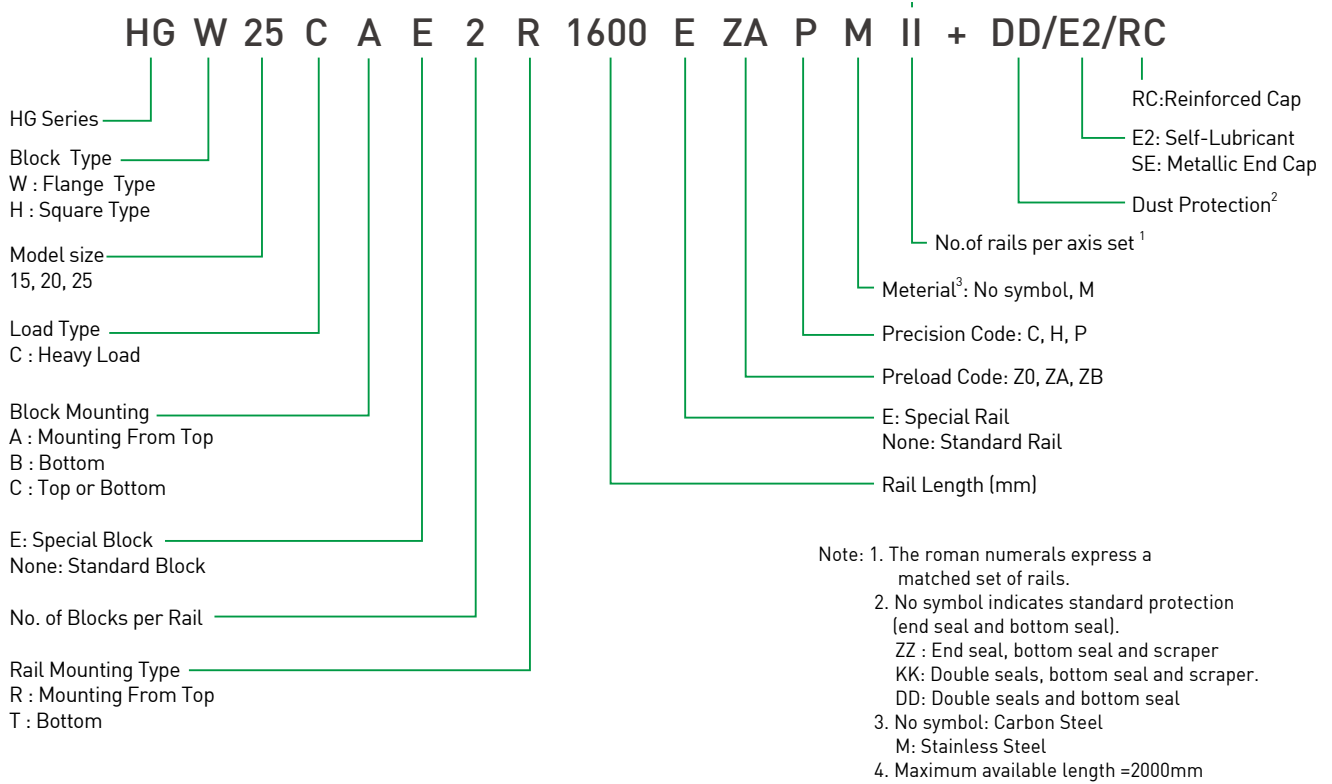
Material	Carbon steel series	Stainless steel series
Time		
Before		
After 8 hours		
After 24 hours		

Note:

Test conditions: -Salt Solution: 5 % NaCl
 -Salt spray chamber temperature: 35°C±2°C
 -Pressure: 1 bar

HG Series

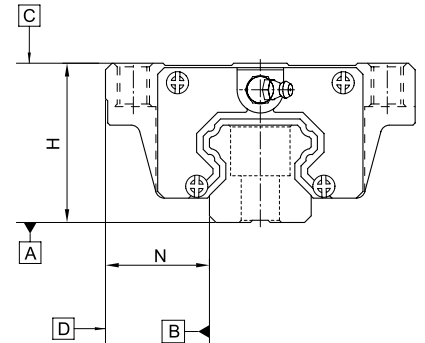
Model Number /



Accuracy Classes /

Unit: mm

Item	HG - 15, 20			HG - 25		
	Normal (C)	High (H)	Precision (P)	Normal (C)	High (H)	Precision (P)
Dimensional tolerance of height H	± 0.1	± 0.03	0 - 0.03	± 0.1	± 0.04	0 - 0.04
Dimensional tolerance of width N	± 0.1	± 0.03	0 - 0.03	± 0.1	± 0.04	0 - 0.04
Variation of height H	0.02	0.01	0.006	0.02	0.015	0.007
Variation of width N	0.02	0.01	0.006	0.03	0.015	0.007



Accuracy of Running Parallelism /

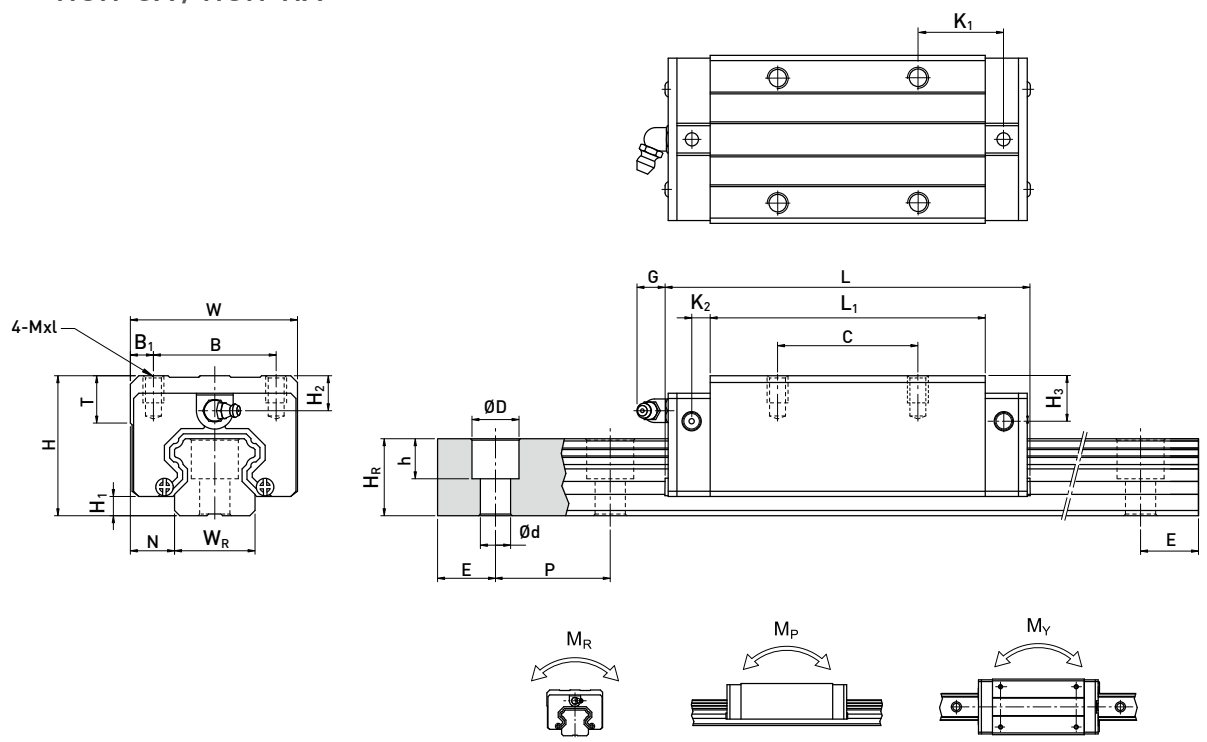
Rail Length (mm)	Accuracy (μm)		
	C	H	P
~ 100	12	7	3
100 ~ 200	14	9	4
200 ~ 300	15	10	5
300 ~ 500	17	12	6
500 ~ 700	20	13	7
700 ~ 900	22	15	8
900 ~ 1,100	24	16	9
1,100 ~ 1,500	26	18	11
1,500 ~ 1,900	28	20	13
1,900 ~ 2,000	31	22	15

Preload Classes /

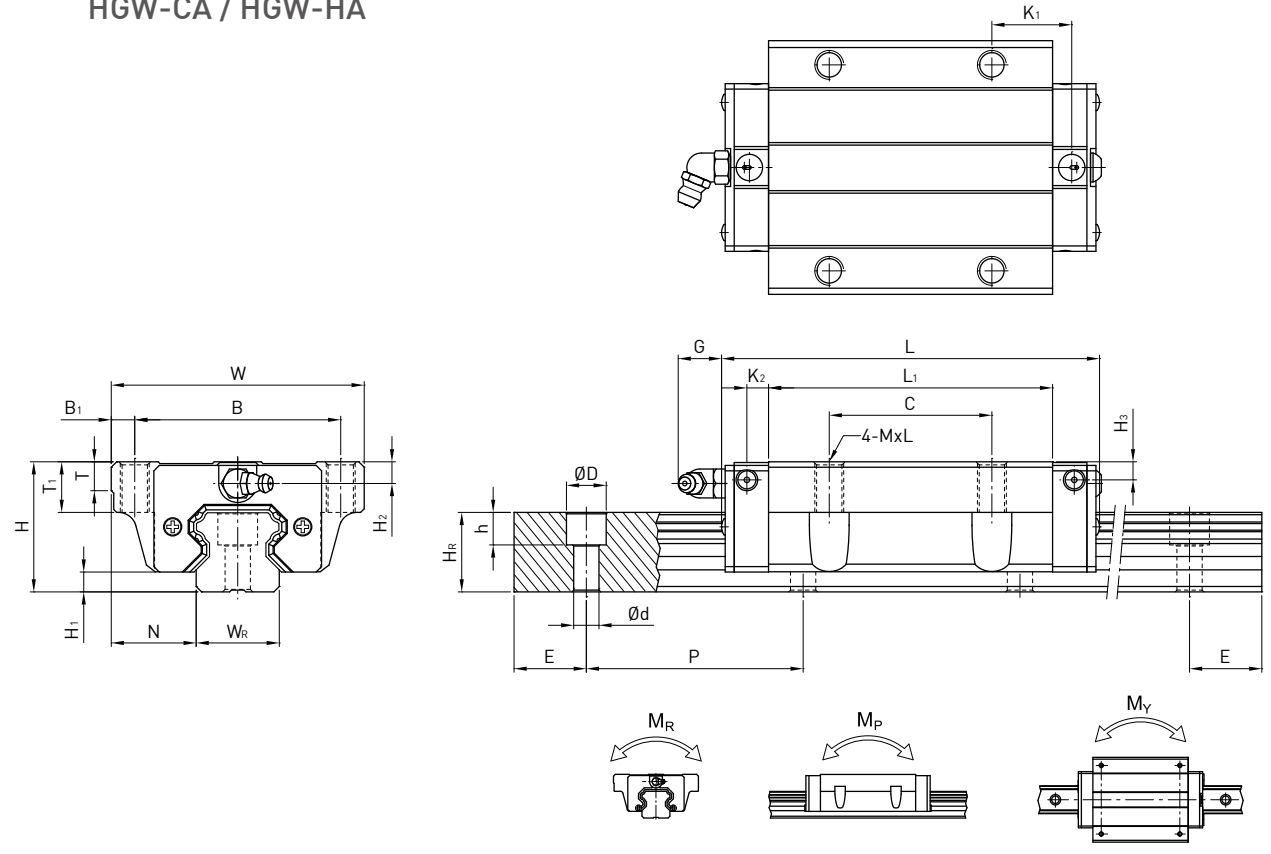
Class	Code	Preload	Condition
Light Preload	Z0	0~ 0.02C	Certain load direction, low impact, low precision required
Medium Preload	ZA	0.05C~0.07C	High precision required
Heavy Preload	ZB	0.10C~ 0.12C	High rigidity required, with vibration and impact

Dimensions for HG Series Stainless Steel Linear Guideway /

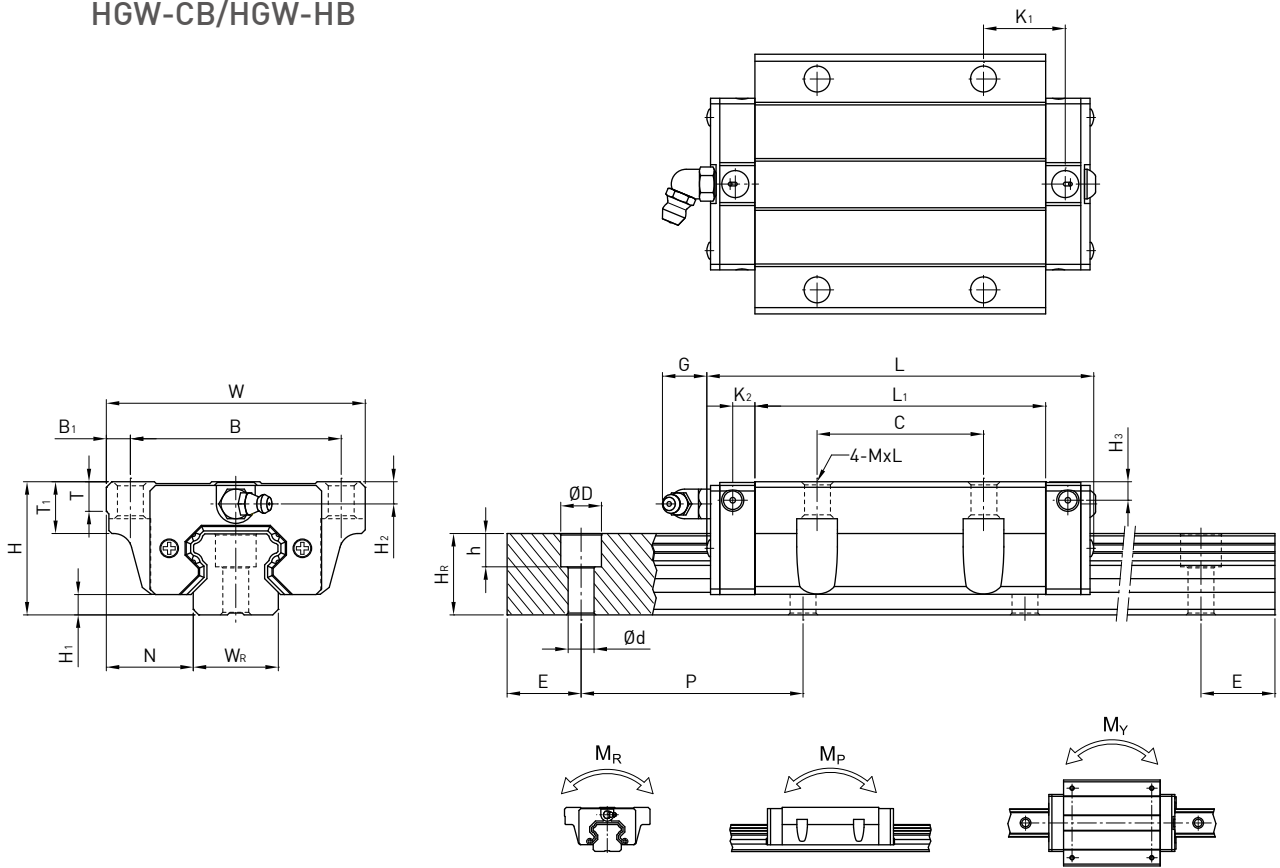
HGH-CA / HGH-HA



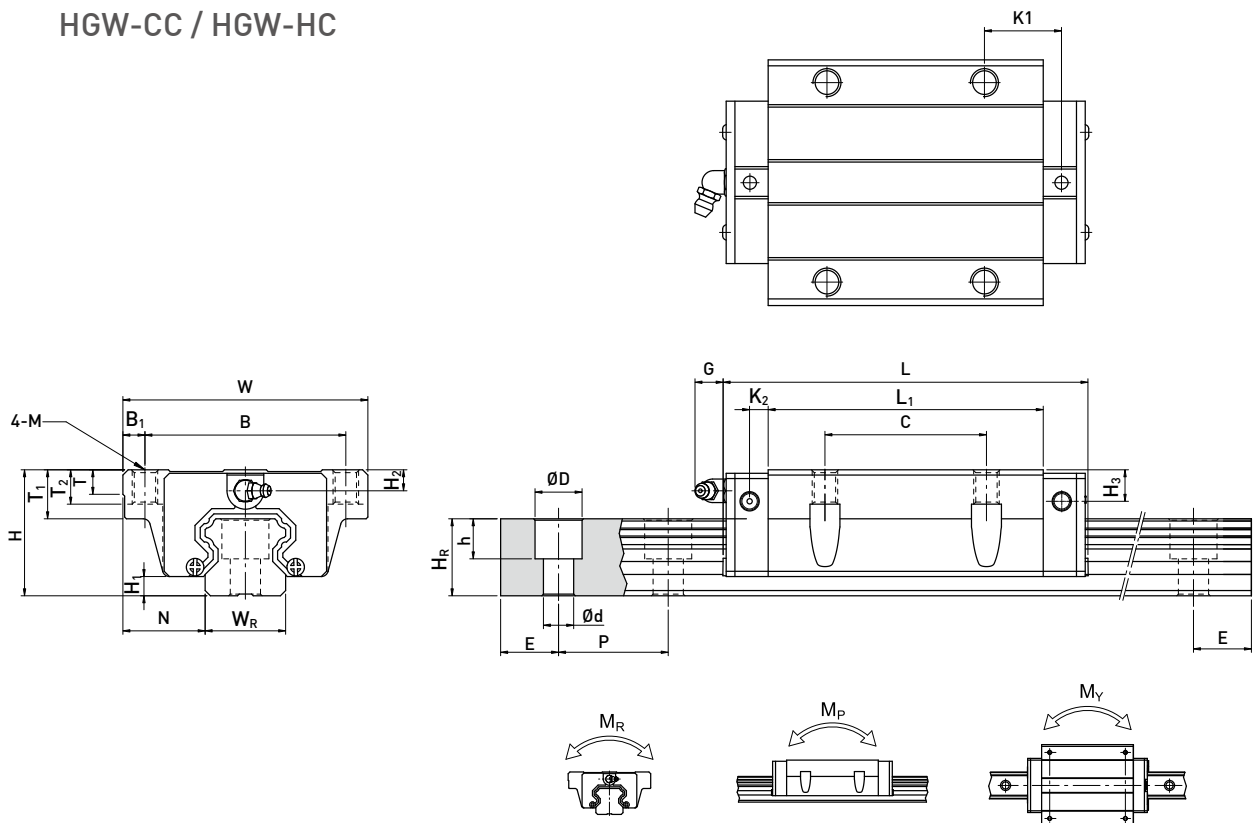
HGW-CA / HGW-HA



HGW-CB/HGW-HB



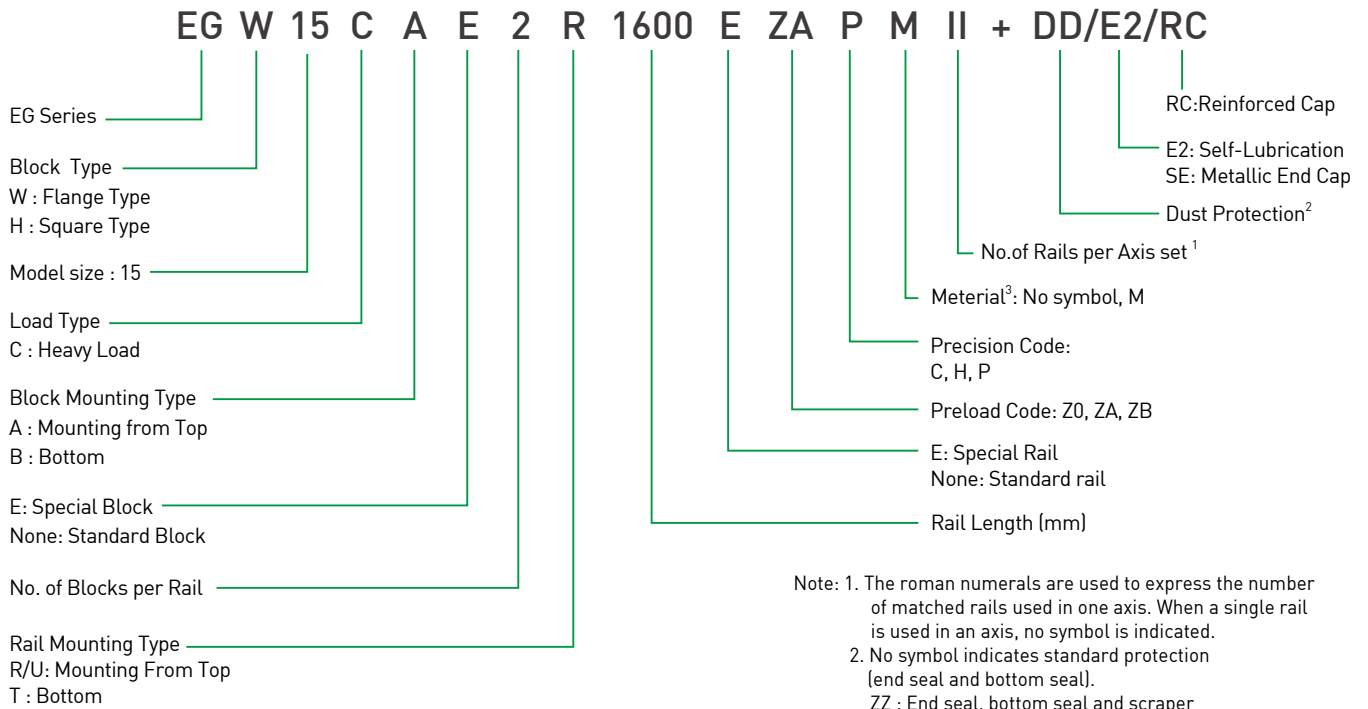
HGW-CC / HGW-HC



Model No.	Dimensions of Assembly (mm)			Dimensions of Block (mm)														Dimensions of Rail (mm)								Mounting Bolt for Rail (mm)	Basic Dynamic Load Rating C(kN)	Basic Static Load Rating C ₀ (kN)	Static Rated Moment		
																													M _R kN-m	M _P kN-m	M _V kN-m
	H	H ₁	N	W	B	B ₁	C	L ₁	L	K ₁	K ₂	G	Mxl	T	T ₁	T ₂	H ₂	H ₃	W _R	H _R	D	h	d	P	E	(mm)	C(kN)	C ₀ (kN)	M _R kN-m	M _P kN-m	M _V kN-m
HGH15CA	28	4.3	9.5	34	26	4	26	39.4	61.4	10	4.85	5.3	M4x5	6	-	-	7.95	7.7	15	15	7.5	5.3	4.5	60	20	M4x16	14.7	23.47	0.12	0.1	0.1
HGH20CA	30	4.6	12	44	32	6	36	50.5	77.5	12.25	6	12	M5x6	8	-	-	6	6	20	17.5	9.5	8.5	6	60	20	M5x16	27.1	36.68	0.27	0.2	0.2
HGH20HA	30	4.6	12	44	32	6	50	65.2	92.2	12.6	6	12	M5x6	8	-	-	6	6	20	17.5	9.5	8.5	6	60	20	M5x16	32.7	47.96	0.35	0.35	0.35
HGH25CA	40	5.5	12.5	48	35	6.5	35	58	84	15.7	6	12	M6x8	8	-	-	10	9	23	22	11	9	7	60	20	M6x20	34.9	52.82	0.42	0.33	0.33
HGH25HA	40	5.5	12.5	48	35	6.5	50	78.6	104.6	18.5	6	12	M6x8	8	-	-	10	9	23	22	11	9	7	60	20	M6x20	42.2	69.07	0.56	0.57	0.57
HGW15CA	24	4.3	16	47	38	4.5	30	39.4	61.4	8	4.85	5.3	M5	6	8.9	-	3.95	3.7	15	15	7.5	5.3	4.5	60	20	M4x16	14.7	23.47	0.12	0.1	0.1
HGW20CA	30	4.6	21.5	63	53	5	40	50.5	77.5	10.25	6	12	M6	8	10	-	6	6	20	17.5	9.5	8.5	6	60	20	M5x16	27.1	36.68	0.27	0.2	0.2
HGW20HA	30	4.6	21.5	63	53	5	40	65.2	92.2	17.6	6	12	M6	8	10	-	6	6	20	17.5	9.5	8.5	6	60	20	M5x16	32.7	47.96	0.35	0.35	0.35
HGW25CA	36	5.5	23.5	70	57	6.5	45	58	84	10.7	6	12	M8	8	14	-	6	5	23	22	11	9	7	60	20	M6x20	34.9	52.82	0.42	0.33	0.33
HGW25HA	36	5.5	23.5	70	57	6.5	45	78.6	104.6	21	6	12	M8	8	14	-	6	5	23	22	11	9	7	60	20	M6x20	42.2	69.07	0.56	0.57	0.57
HGW15CB	24	4.3	16	47	38	4.5	30	39.4	61.4	8	4.85	5.3	Ø4.5	6	8.9	6.95	3.95	3.7	15	15	7.5	5.3	4.5	60	20	M4x16	14.7	23.47	0.12	0.1	0.1
HGW20CB	30	4.6	21.5	63	53	5	40	50.5	77.5	10.25	6	12	Ø6	8	10	9.5	6	6	20	17.5	9.5	8.5	6	60	20	M5x16	27.1	36.68	0.27	0.2	0.2
HGW20HB	30	4.6	21.5	63	53	5	40	65.2	92.2	17.6	6	12	Ø6	8	10	9.5	6	6	20	17.5	9.5	8.5	6	60	20	M5x16	32.7	47.96	0.35	0.35	0.35
HGW25CB	36	5.5	23.5	70	57	6.5	45	58	84	10.7	6	12	Ø7	8	14	10	6	5	23	22	11	9	7	60	20	M6x20	34.9	52.82	0.42	0.33	0.33
HGW25HB	36	5.5	23.5	70	57	6.5	45	78.6	104.6	21	6	12	Ø7	8	14	10	6	5	23	22	11	9	7	60	20	M6x20	42.2	69.07	0.56	0.57	0.57
HGW15CC	24	4.3	16	47	38	4.5	30	39.4	61.4	8	4.85	5.3	M5	6	8.9	6.95	3.95	3.7	15	15	7.5	5.3	4.5	60	20	M4x16	14.7	23.47	0.12	0.1	0.1
HGW20CC	30	4.6	21.5	63	53	5	40	50.5	77.5	10.25	6	12	M6	8	10	9.5	6	6	20	17.5	9.5	8.5	6	60	20	M5x16	27.1	36.68	0.27	0.2	0.2
HGW20HC	30	4.6	21.5	63	53	5	40	65.2	92.2	17.6	6	12	M6	8	10	9.5	6	6	20	17.5	9.5	8.5	6	60	20	M5x16	32.7	47.96	0.35	0.35	0.35
HGW25CC	36	5.5	23.5	70	57	6.5	45	58	84	10.7	6	12	M8	8	14	10	6	5	23	22	11	9	7	60	20	M6x20	34.9	52.82	0.42	0.33	0.33
HGW25HC	36	5.5	23.5	70	57	6.5	45	78.6	104.6	21	6	12	M8	8	14	10	6	5	23	22	11	9	7	60	20	M6x20	42.2	69.07	0.56	0.57	0.57

EG Series

Model Number /

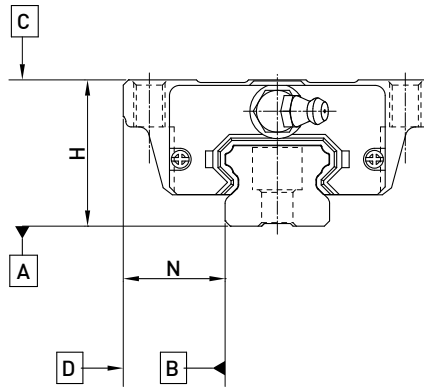


- Note: 1. The roman numerals are used to express the number of matched rails used in one axis. When a single rail is used in an axis, no symbol is indicated.
2. No symbol indicates standard protection (end seal and bottom seal).
 ZZ : End seal, bottom seal and scraper
 KK: Double seals, bottom seal and scraper.
 DD: Double seals and bottom seal
3. No symbol: Carbon Steel
 M: Stainless Steel
4. Maximum available length =2000mm

Accuracy Classes /

Unit: mm

Item	EG - 15		
	Normal (C)	High (H)	Precision (P)
Accuracy Classes			
Dimensional tolerance of height H	± 0.1	± 0.03	0 - 0.03
Dimensional tolerance of width N	± 0.1	± 0.03	0 - 0.03
Variation of height H	0.02	0.01	0.006
Variation of width N	0.02	0.01	0.006



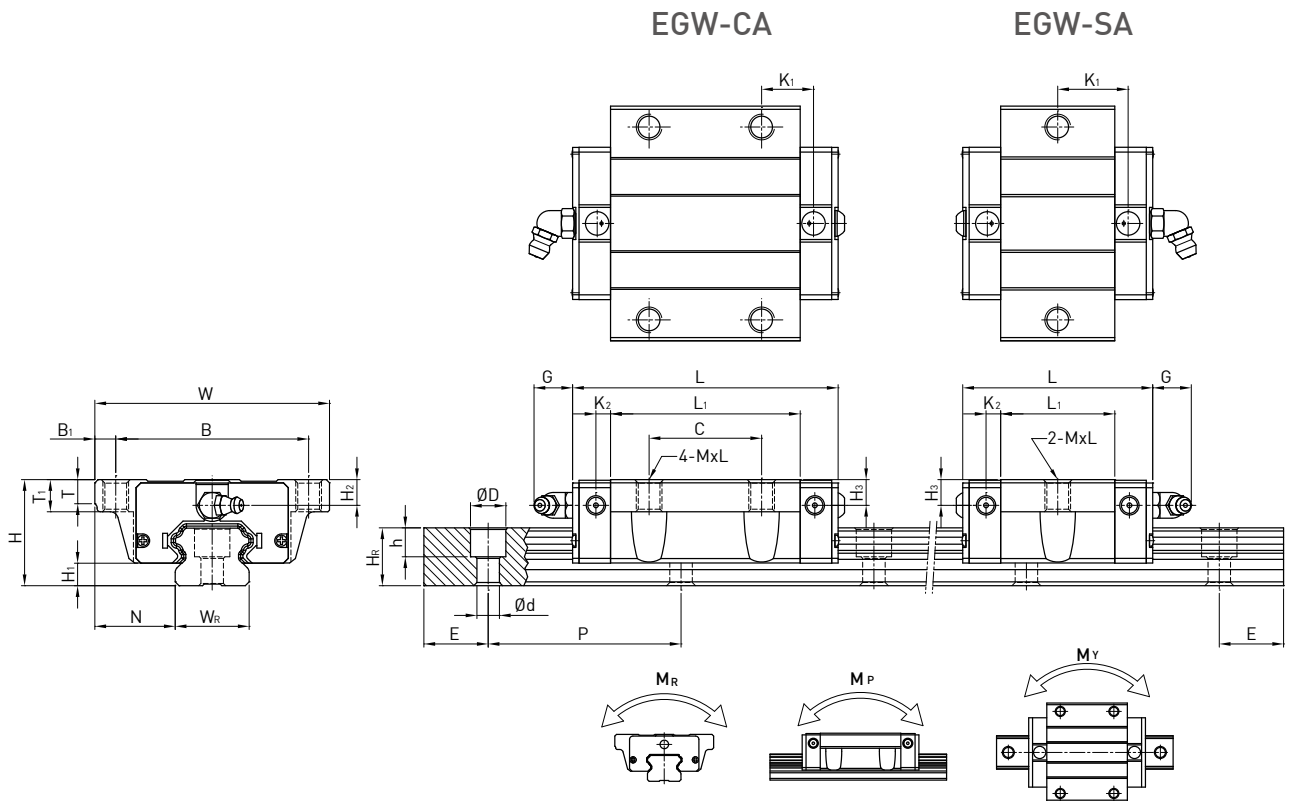
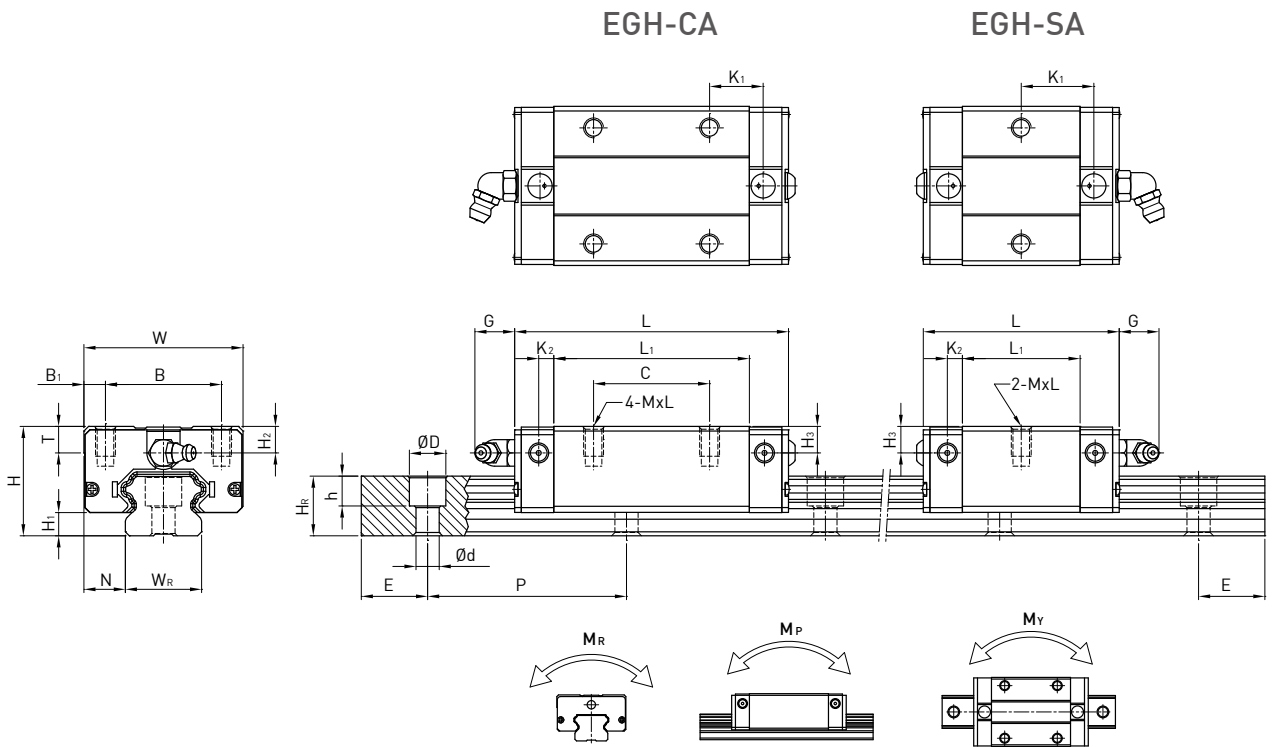
Accuracy of Running Parallelism /

Rail Length (mm)	Accuracy (µm)		
	C	H	P
~ 100	12	7	3
100 ~ 200	14	9	4
200 ~ 300	15	10	5
300 ~ 500	17	12	6
500 ~ 700	20	13	7
700 ~ 900	22	15	8
900 ~ 1,100	24	16	9
1,100 ~ 1,500	26	18	11
1,500 ~ 1,900	28	20	13
1,900 ~ 2,000	31	22	15

Preload Classes /

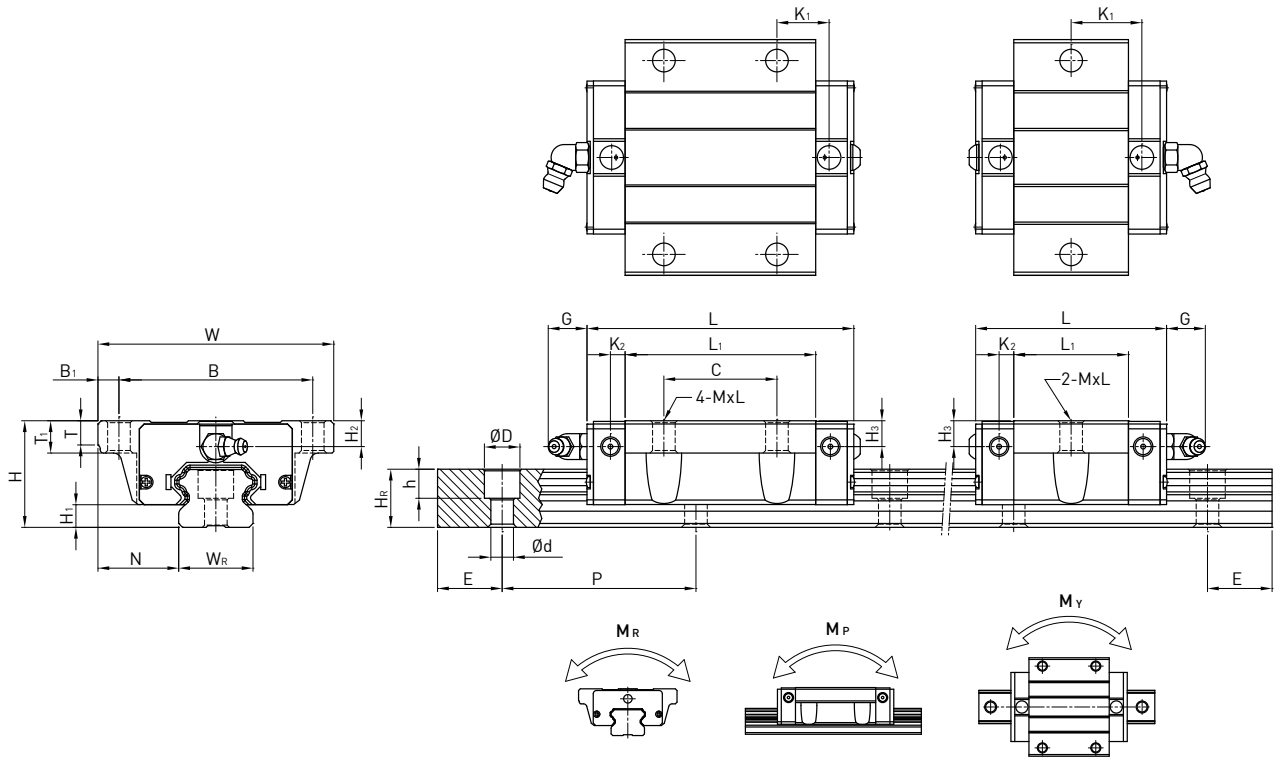
Class	Code	Preload	Condition
Very Light Preload	Z0	0~ 0.02C	Certain load direction, low impact, low precision required
Light Preload	ZA	0.03C~0.05C	low load and high precision required
Medium Preload	ZB	0.06C~ 0.08C	High rigidity required, with vibration and impact

Dimensions for EG Series Stainless Steel Linear Guideway /



EGW-CB

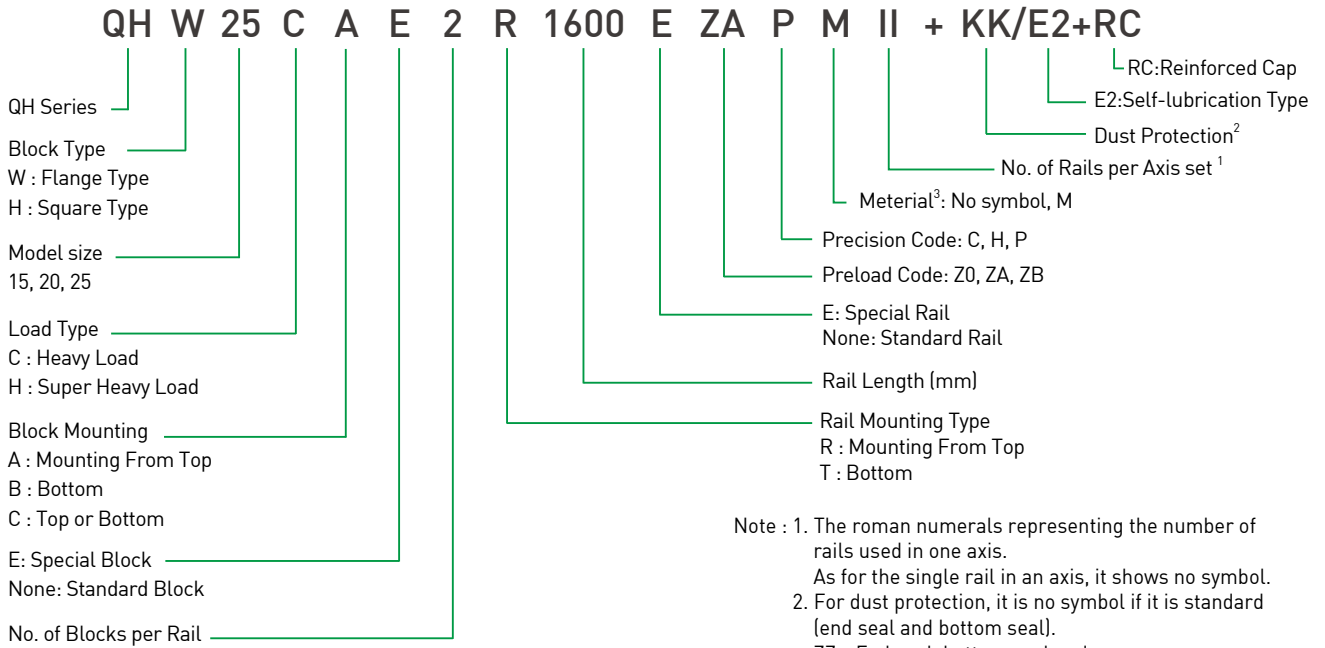
EGW-SB



Model No.	Dimensions of Assembly (mm)		Dimensions of Block (mm)													Dimensions of Rail (mm)					Mounting Bolt for Rail (mm)	Basic Dynamic Load Rating C (kN)	Basic Static Load Rating C ₀ (kN)	Static Rated Moment						
	H	H ₁	N	W	B	B ₁	C	L ₁	L	K ₁	K ₂	G	MxL	T	T ₁	H ₂	H ₃	W _R	H _R	D				h	d	P	E	M _R	M _P	M _Y
	mm	mm	mm	mm	mm	mm	mm	mm	mm	mm	mm	mm	mm	mm	mm	mm	mm	mm	mm	mm				mm	mm	mm	mm	mm	kN-m	kN-m
EGH15SA	24	4.5	9.5	34	26	4	-	23.1	40.1	14.8	3.5	5.7	M4x6	6	-	5.5	6	15	12.5	6	4.5	3.5	60	20	M3x16	5.35	9.4	0.08	0.04	0.04
EGH15CA	24	4.5	9.5	34	26	4	26	39.8	56.8	10.15	3.5	5.7	M4x6	6	-	5.5	6	15	12.5	6	4.5	3.5	60	20	M3x16	7.83	16.19	0.13	0.1	0.1
EGW15SA	24	4.5	18.5	52	41	5.5	-	23.1	40.1	14.8	3.5	5.7	M5	5	7	5.5	6	15	12.5	6	4.5	3.5	60	20	M3x16	5.35	9.4	0.08	0.04	0.04
EGW15CA	24	4.5	18.5	52	41	5.5	26	39.8	56.8	10.15	3.5	5.7	M5	5	7	5.5	6	15	12.5	6	4.5	3.5	60	20	M3x16	7.83	16.19	0.13	0.1	0.1
EGW15SB	24	4.5	18.5	52	41	5.5	-	23.1	40.1	14.8	3.5	5.7	Ø4.5	5	7	5.5	6	15	12.5	6	4.5	3.5	60	20	M3x16	5.35	9.4	0.08	0.04	0.04
EGW15CB	24	4.5	18.5	52	41	5.5	26	39.8	56.8	10.15	3.5	5.7	Ø4.5	5	7	5.5	6	15	12.5	6	4.5	3.5	60	20	M3x16	7.83	16.19	0.13	0.1	0.1

QH Series

Model Number /

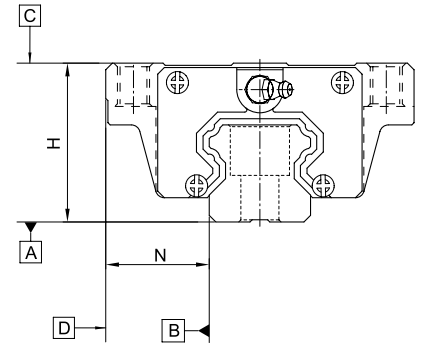


- Note : 1. The roman numerals representing the number of rails used in one axis.
As for the single rail in an axis, it shows no symbol.
2. For dust protection, it is no symbol if it is standard (end seal and bottom seal).
ZZ : End seal, bottom seal and scraper.
KK : Double seals, bottom seal and scraper.
DD : Double seals and bottom seal.
3. No symbol: Carbon Steel
M: Stainless Steel
4. Maximum available length =2000mm

Accuracy Classes /

Unit: mm

Item	QH - 15, 20			QH - 25		
	Normal (C)	High (H)	Precision (P)	Normal (C)	High (H)	Precision (P)
Dimensional tolerance of height H	± 0.1	± 0.03	0 - 0.03	± 0.1	± 0.04	0 - 0.04
Dimensional tolerance of width N	± 0.1	± 0.03	0 - 0.03	± 0.1	± 0.04	0 - 0.04
Variation of height H	0.02	0.01	0.006	0.02	0.015	0.007
Variation of width N	0.02	0.01	0.006	0.03	0.015	0.007



Accuracy of Running Parallelism /

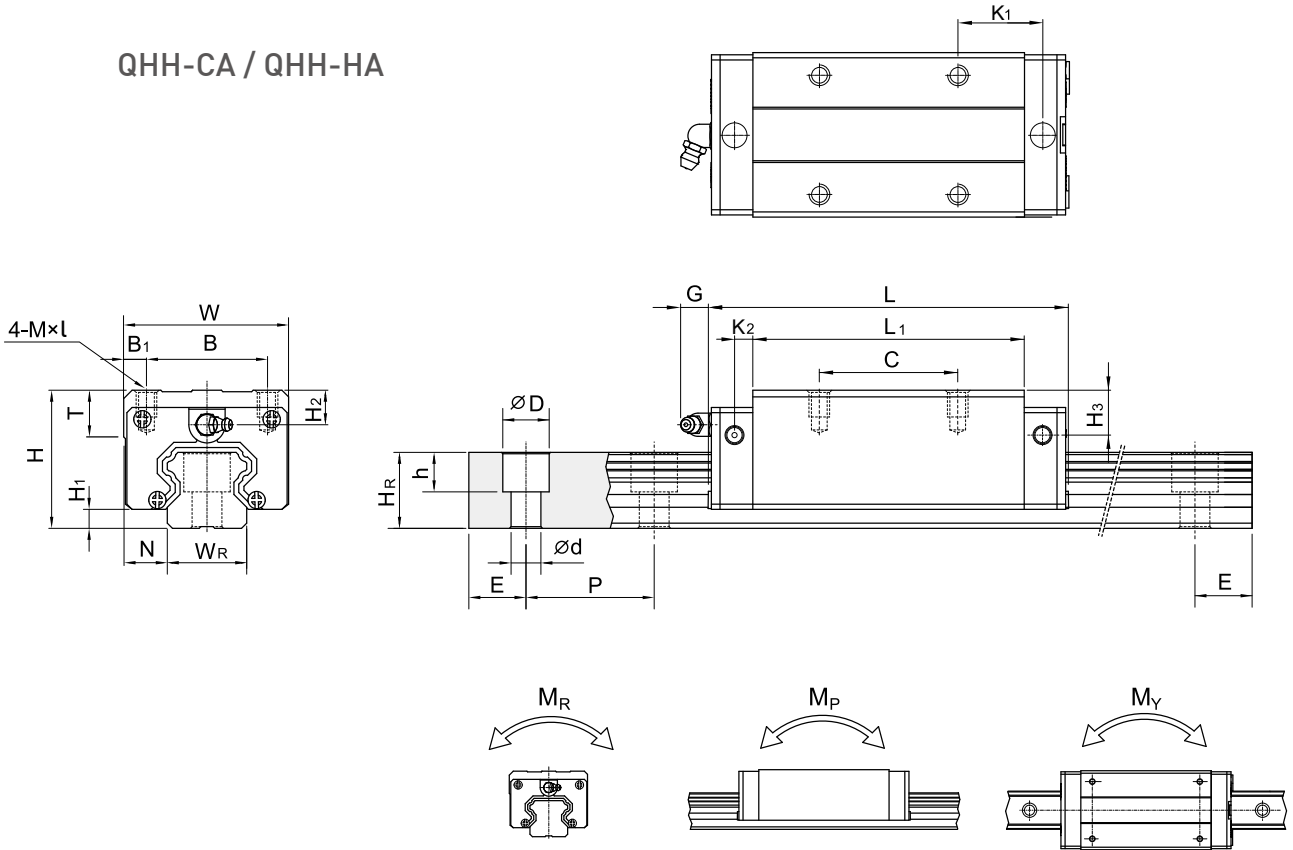
Rail Length (mm)	Accuracy (μm)		
	C	H	P
~ 100	12	7	3
100 ~ 200	14	9	4
200 ~ 300	15	10	5
300 ~ 500	17	12	6
500 ~ 700	20	13	7
700 ~ 900	22	15	8
900 ~ 1,100	24	16	9
1,100 ~ 1,500	26	18	11
1,500 ~ 1,900	28	20	13
1,900 ~ 2,000	31	22	15

Preload Classes /

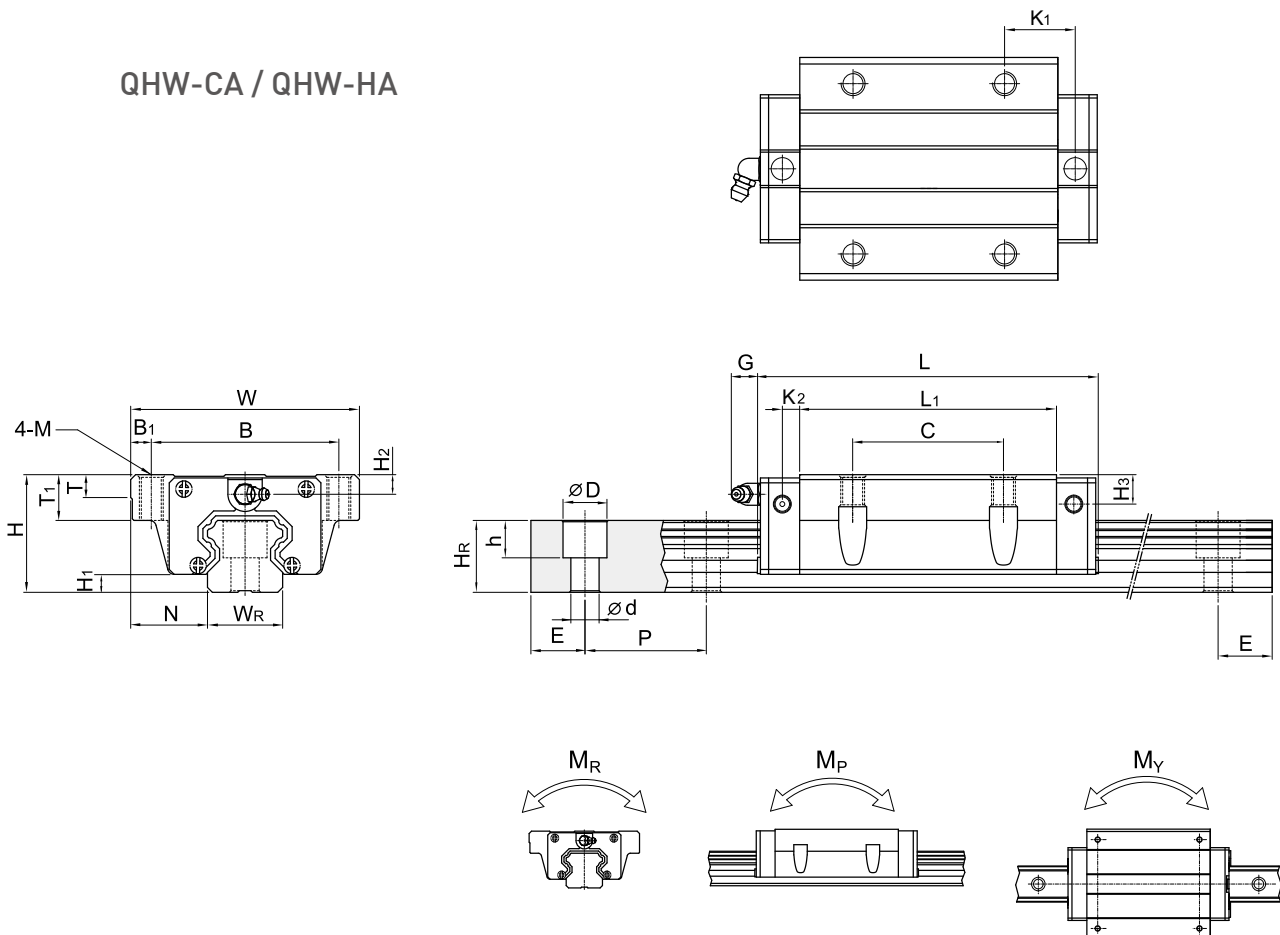
Class	Code	Preload	Condition
Light Preload	Z0	0~ 0.02C	Certain load direction, low impact, low precision required
Medium Preload	ZA	0.05C~0.07C	High precision required
Heavy Preload	ZB	0.10C~ 0.12C	High rigidity required, with vibration and impact

Dimensions for QH Series Stainless Steel Linear Guideway /

QHH-CA / QHH-HA

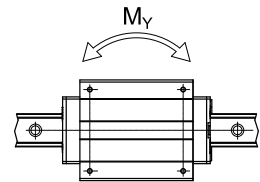
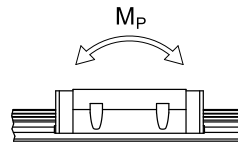
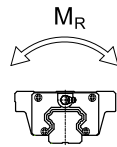
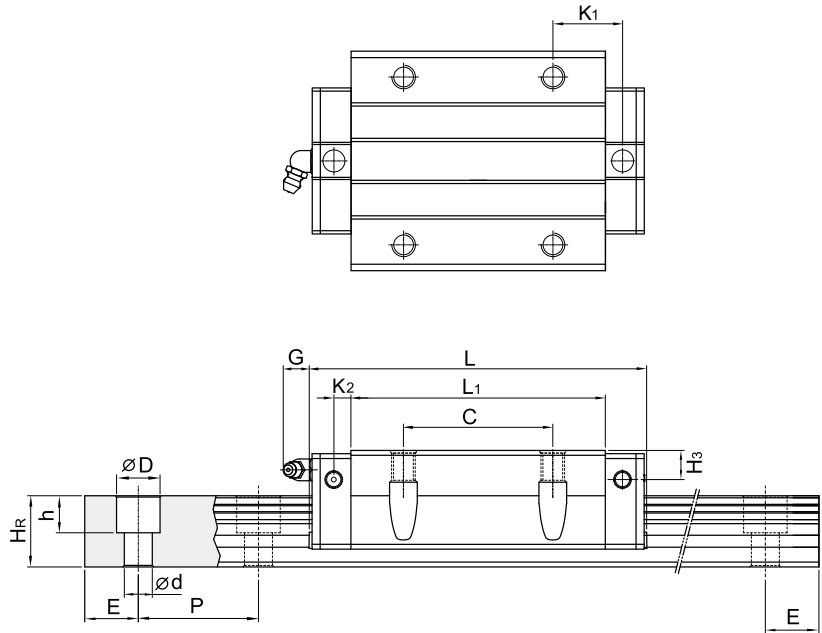
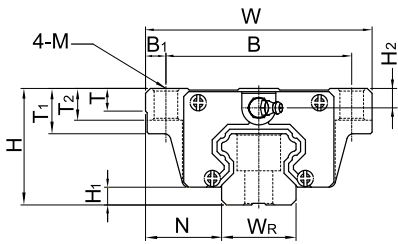


QHW-CA / QHW-HA

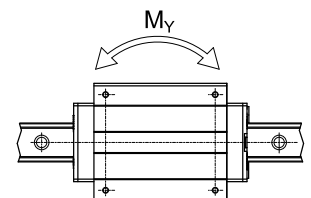
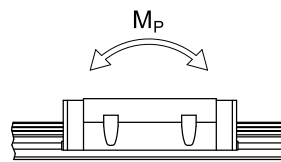
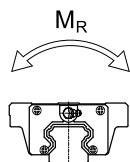
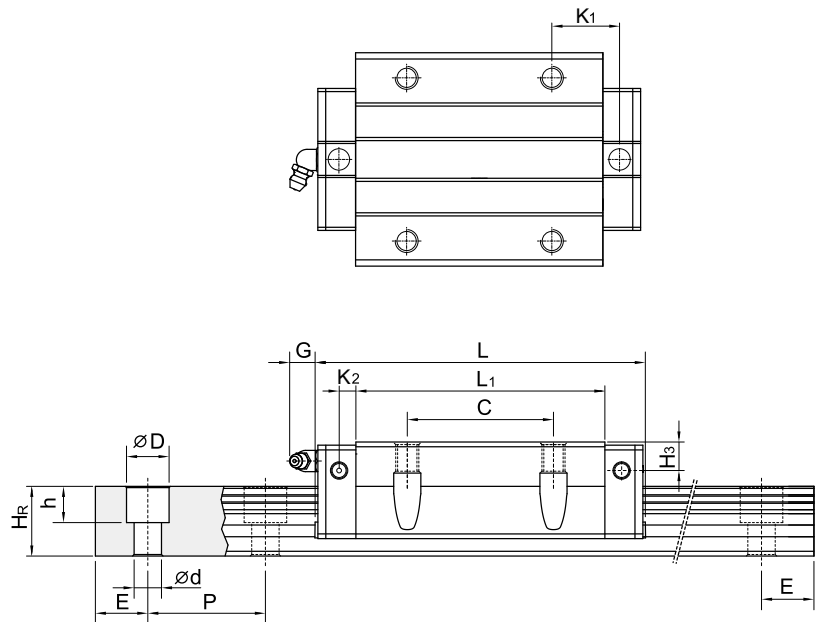
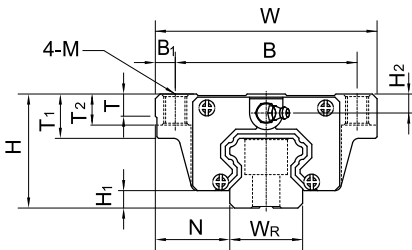


Dimensions for QH Series Stainless Steel Linear Guideway /

QHW-CB / QHW-HB



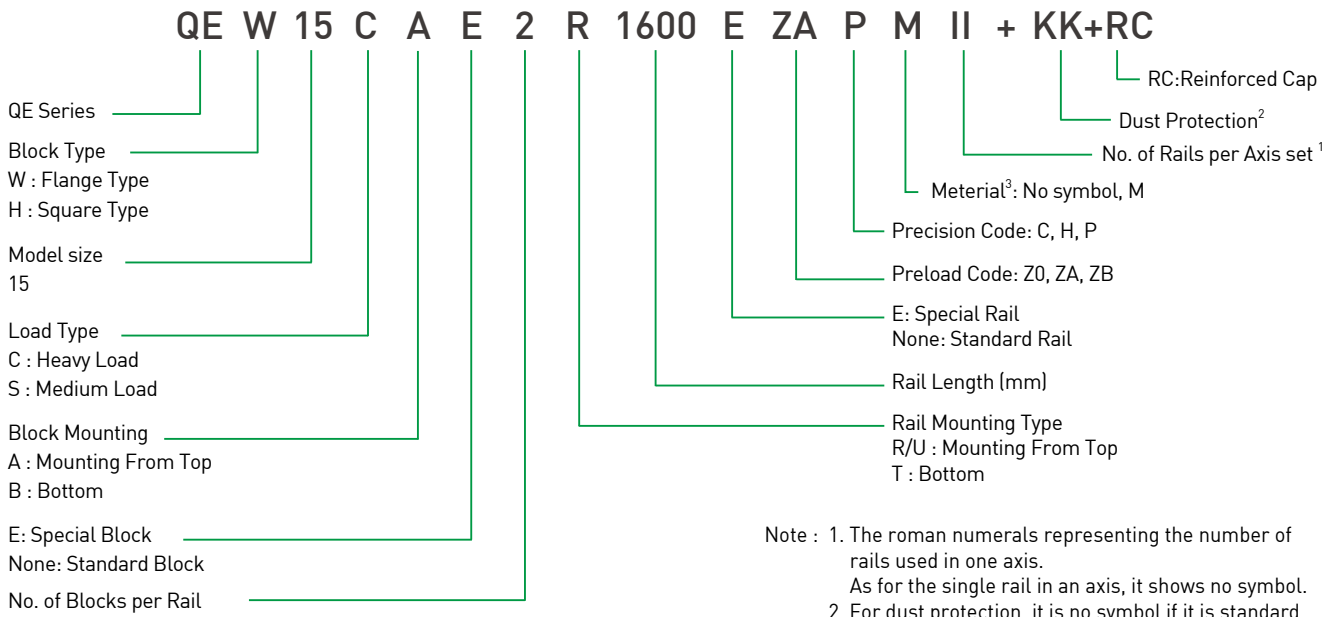
QHW-CC / QHW-HC



Model No.	Dimensions of Assembly (mm)			Dimensions of Block (mm)													Dimensions of Rail (mm)								Mounting Bolt for Rail (mm)	Basic Dynamic Load Rating C(kN)	Basic Static Load Rating C ₀ (kN)	Static Rated Moment			
	H	H ₁	N	W	B	B ₁	C	L ₁	L	K ₁	K ₂	G	Mxl	T	T ₁	T ₂	H ₂	H ₃	W _R	H _R	D	h	d	P				E	M _R kN-m	M _P kN-m	M _Y kN-m
QHH15CA	28	4	9.5	34	26	4	26	39.4	61.4	10	5	5.3	M4x5	6	-	-	7.95	8.2	15	15	7.5	5.3	4.5	60	20	M4x16	17.94	19.86	0.10	0.08	0.08
QHH20CA	30	4.6	12	44	32	6	36	50.5	76.7	11.75	6	12	M5x6	8	-	-	6	6	20	17.5	9.5	8.5	6	60	20	M5x16	30.0	33.86	0.26	0.19	0.19
QHH20HA							50	65.2	91.4	12.1																M5x16	35.7	42.31	0.31	0.27	0.27
QHH25CA	40	5.5	12.5	48	35	6.5	35	58	83.4	15.7	6	12	M6x8	8	-	-	10	9	23	22	11	9	7	60	20	M6x20	41.9	48.75	0.39	0.31	0.31
QHH25HA							50	78.6	104	18.5																M6x20	50.61	60.94	0.50	0.45	0.45
QHW15CA	24	4	16	47	38	4.5	30	39.4	61.4	8	5	5.3	M5	6	8.9	-	3.95	4.2	15	15	7.5	5.3	4.5	60	20	M4x16	17.94	19.86	0.1	0.08	0.08
QHW20CA	30	4.6	21.5	63	53	5	40	50.5	76.7	9.75	6	12	M6	8	10	-	6	6	20	17.5	9.5	8.5	6	60	20	M5x16	30.0	33.86	0.26	0.19	0.19
QHW20HA							40	65.2	91.4	17.1																M5x16	35.7	42.31	0.31	0.27	0.27
QHW25CA	36	5.5	23.5	70	57	6.5	45	58	83.4	10.7	6	12	M8	8	14	-	6	5	23	22	11	9	7	60	20	M6x20	41.9	48.75	0.39	0.31	0.31
QHW25HA							45	78.6	104	21																M6x20	50.61	60.94	0.5	0.45	0.45
QHW15CB	24	4	16	47	38	4.5	30	39.4	61.4	8	5	5.3	Ø4.5	6	8.9	6.95	3.95	4.2	15	15	7.5	5.3	4.5	60	20	M4x16	17.94	19.86	0.1	0.08	0.08
QHW20CB	30	4.6	21.5	63	53	5	40	50.5	76.7	9.75	6	12	Ø6	8	10	9.5	6	6	20	17.5	9.5	8.5	6	60	20	M5x16	30	33.86	0.26	0.19	0.19
QHW20HB	30	4.6	21.5	63	53	5	40	65.2	91.4	17.1	6	12	Ø6	8	10	9.5	6	6	20	17.5	9.5	8.5	6	60	20	M5x16	35.7	42.31	0.31	0.27	0.27
QHW25CB	36	5.5	23.5	70	57	6.5	45	58	83.4	10.7	6	12	Ø7	8	14	10	6	5	23	22	11	9	7	60	20	M6x20	41.9	48.75	0.39	0.31	0.31
QHW25HB	36	5.5	23.5	70	57	6.5	45	78.6	104	21	6	12	Ø7	8	14	10	6	5	23	22	11	9	7	60	20	M6x20	50.61	60.94	0.5	0.45	0.45
QHW15CC	24	4	16	47	38	4.5	30	39.4	61.4	8	5	5.3	M5	6	8.9	6.95	3.95	4.2	15	15	7.5	5.3	4.5	60	20	M4x16	17.94	19.86	0.1	0.08	0.08
QHW20CC	30	4.6	21.5	63	53	5	40	50.5	76.7	9.75	6	12	M6	8	10	9.5	6	6	20	17.5	9.5	8.5	6	60	20	M5x16	30.0	33.86	0.26	0.19	0.19
QHW20HC							40	65.2	91.4	17.1																M5x16	35.7	42.31	0.31	0.27	0.27
QHW25CC	36	5.5	23.5	70	57	6.5	45	58	83.4	10.7	6	12	M8	8	14	10	6	5	23	22	11	9	7	60	20	M6x20	41.9	48.75	0.39	0.31	0.31
QHW25HC							45	78.6	104	21																M6x20	50.61	60.94	0.5	0.45	0.45

QE Series

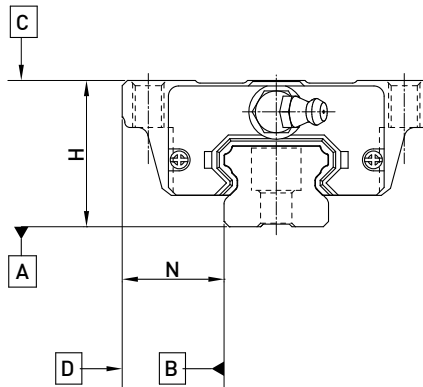
Model Number /



- Note : 1. The roman numerals representing the number of rails used in one axis.
As for the single rail in an axis, it shows no symbol.
2. For dust protection, it is no symbol if it is standard (end seal and bottom seal).
ZZ : End seal, bottom seal and scraper.
KK : Double seals, bottom seal and scraper.
DD : Double seals and bottom seal.
3. No symbol: Carbon Steel
M: Stainless Steel
4. Maximum available length =2000mm

Accuracy Classes /

Item	QE - 15		
	Normal (C)	High (H)	Precision (P)
Dimensional tolerance of height H	± 0.1	± 0.03	0 - 0.03
Dimensional tolerance of width N	± 0.1	± 0.03	0 - 0.03
Variation of height H	0.02	0.01	0.006
Variation of width N	0.02	0.01	0.006



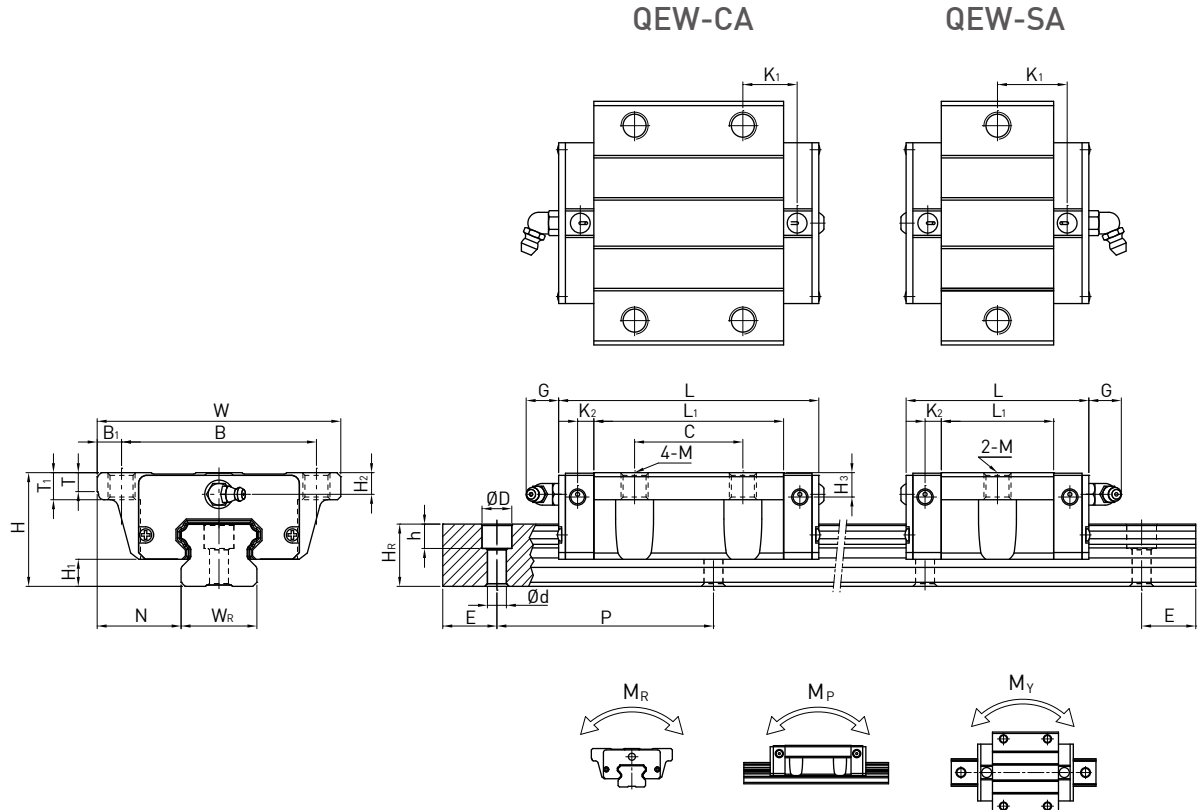
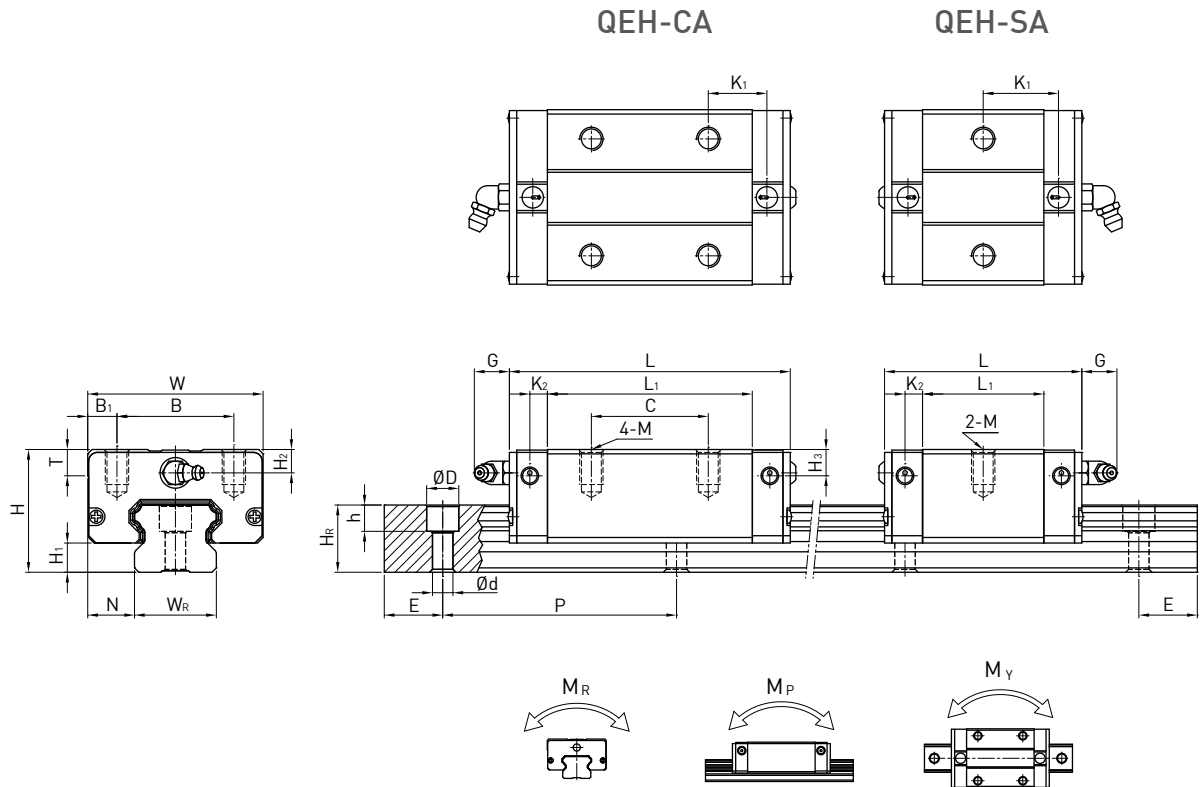
Accuracy of Running Parallelism /

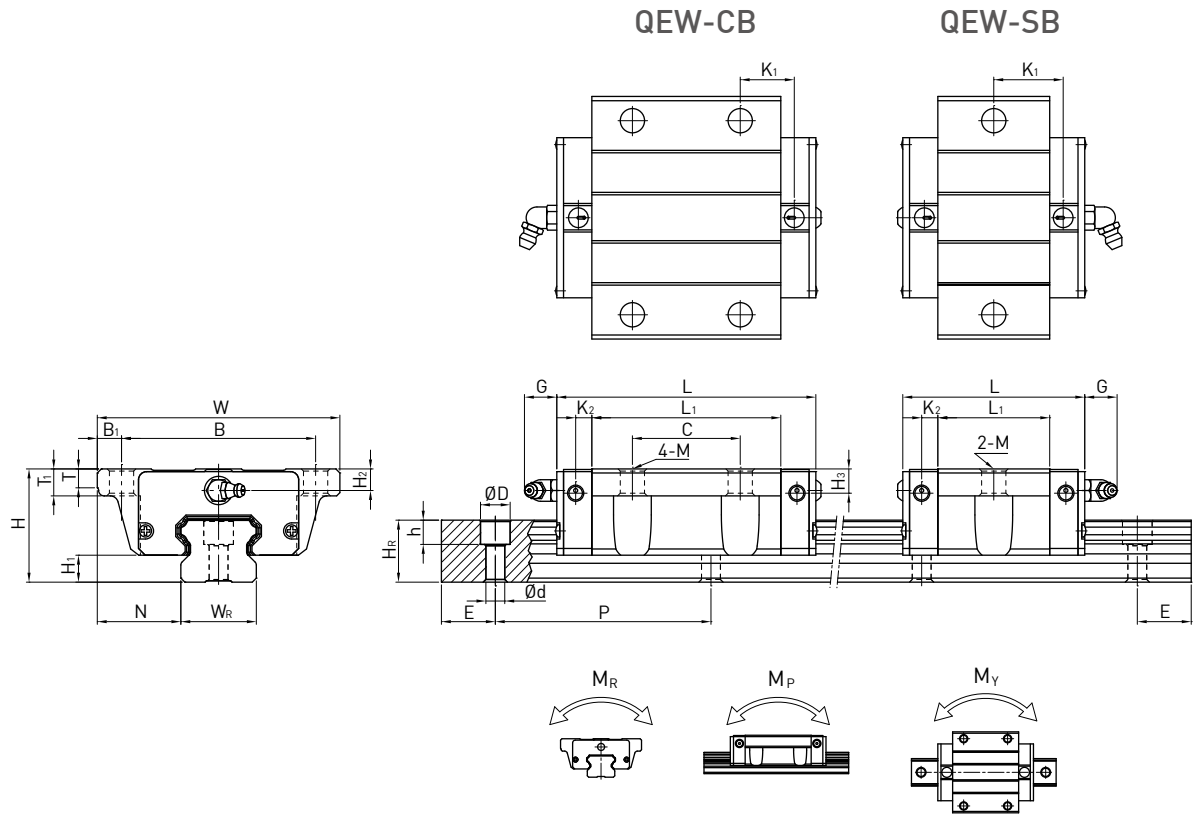
Rail Length (mm)	Accuracy (µm)		
	C	H	P
~ 100	12	7	3
100 ~ 200	14	9	4
200 ~ 300	15	10	5
300 ~ 500	17	12	6
500 ~ 700	20	13	7
700 ~ 900	22	15	8
900 ~ 1,100	24	16	9
1,100 ~ 1,500	26	18	11
1,500 ~ 1,900	28	20	13
1,900 ~ 2,000	31	22	15

Preload Classes /

Class	Code	Preload	Condition
Very Light Preload	Z0	0~ 0.02C	Certain load direction, low impact, low precision required
Light Preload	ZA	0.03C~0.05C	low load and high precision required
Medium Preload	ZB	0.06C~ 0.08C	High rigidity required, with vibration and impact

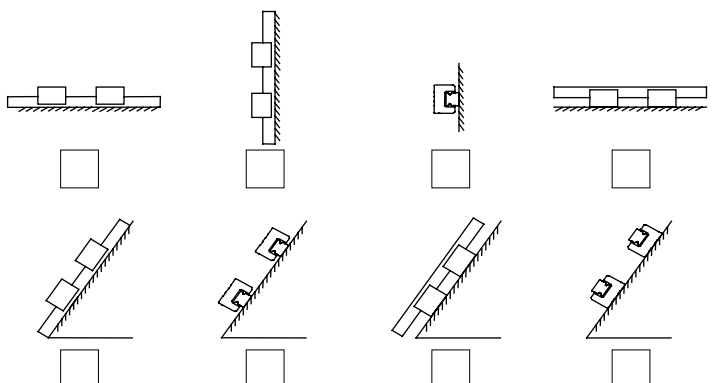
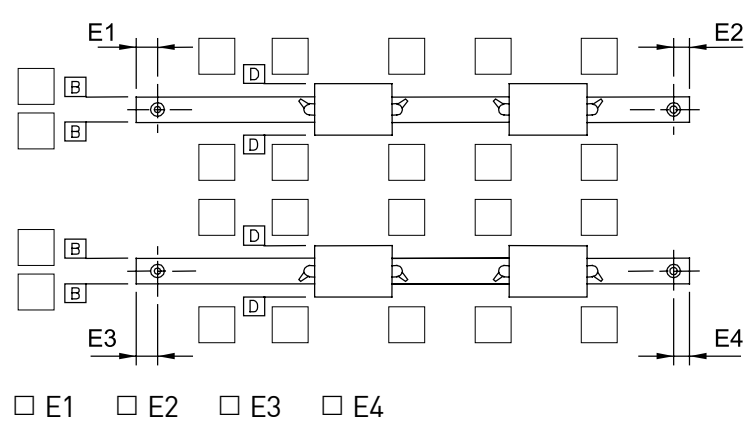
Dimensions for QE Series Stainless Steel Linear Guideway /





Model No.	Dimensions of Assembly (mm)		Dimensions of Block (mm)															Dimensions of Rail (mm)					Mounting Bolt for Rail (mm)	Basic Dynamic Load Rating C(kN)	Basic Static Load Rating C ₀ (kN)	Static Rated Moment				
	H	H ₁	N	W	B	B ₁	C	L ₁	L	K ₁	K ₂	G	Mxl	T	T ₁	H ₂	H ₃	W _R	H _R	D	h	d				P	E	M _R kN-m	M _P kN-m	M _Y kN-m
	QEH15SA	24	4	9.5	34	26	4	-	23.1	40.1	14.8	3.5	5.7	M4x6	6	-	5.5	6	15	12.5	6	4.5	3.5	60	20	M3x16	8.56	8.79	0.07	0.03
QEH15CA	26	39.8	56.8	10.15																										
QEW15SA	24	4	18.5	52	41	5.5	-	23.1	40.1	14.8	3.5	5.7	M5	5	7	5.5	6	15	12.5	6	4.5	3.5	60	20	M3x16	8.56	8.79	0.07	0.03	0.03
QEW15CA	26	39.8	56.8	10.15																										
QEW15SB	24	4	18.5	52	41	5.5	-	23.1	40.1	14.8	3.5	5.7	Ø4.5	5	7	5.5	6	15	12.5	6	4.5	3.5	60	20	M3x16	8.56	8.79	0.07	0.03	0.03
QEW15CB	26	39.8	56.8	10.15																										

HIWIN Linear Guideway Inquiry Form

Customer:	Date:
Tel. _____	Fax. _____ Confirm by _____
Machine Type _____	Drawing No. _____
Axis	<input type="checkbox"/> X <input type="checkbox"/> Y <input type="checkbox"/> Z <input type="checkbox"/> Other (_____)
Install Position	
Environment	<input type="checkbox"/> Food <input type="checkbox"/> Clean room <input type="checkbox"/> Acid/Alkaline <input type="checkbox"/> Other _____
Material	<input type="checkbox"/> Carbon steel <input type="checkbox"/> Stainless steel
Model No.	_____
Rail Mounting	<input type="checkbox"/> R (from top) <input type="checkbox"/> T (from bottom) <input type="checkbox"/> U (from top with bolt hole enlarged)
Dust Protection	<input type="checkbox"/> Double end seal + Bottom seal (DD) <input type="checkbox"/> Double end seal + Scraper + Bottom seal (KK) <input type="checkbox"/> End seal + Scraper + Bottom seal (ZZ) <input type="checkbox"/> End seal + Bottom seal (U)
Special Option	<input type="checkbox"/> Steel end cap (SE) <input type="checkbox"/> Self Lubrication (E2)
Lubrication	<input type="checkbox"/> Grease nipple (Grease) <input type="checkbox"/> Piping joint (Oil) <input type="checkbox"/> Other _____
Butt-joint	<input type="checkbox"/> No <input type="checkbox"/> Yes
No. of Rail Per Axis	<input type="checkbox"/> I (1) <input type="checkbox"/> II (2) <input type="checkbox"/> III (3) <input type="checkbox"/> Other _____
Reference Surface and Injection Direction	<p>Please mark "X" in the <input type="checkbox"/> to indicate the filling directions.</p>  <p><input type="checkbox"/> E1 <input type="checkbox"/> E2 <input type="checkbox"/> E3 <input type="checkbox"/> E4</p>

Global Sales and Customer Service Site

HIWIN GmbH

OFFENBURG, GERMANY
www.hiwin.de
www.hiwin.eu
info@hiwin.de

HIWIN Schweiz GmbH

JONA, SWITZERLAND
www.hiwin.ch
info@hiwin.ch

HIWIN KOREA

SUWON • CHANGWON, KOREA
www.hiwin.kr
info@hiwin.kr

HIWIN JAPAN

KOBE • NAGOYA • TOKYO • TOHOKU •
NAGANO • SHIZUOKA • HOKURIKU •
HIROSHIMA • FUKUOKA • KUMAMOTO,
JAPAN
www.hiwin.co.jp
info@hiwin.co.jp

HIWIN s.r.o.

BRNO, CZECH REPUBLIC
www.hiwin.cz
info@hiwin.cz

HIWIN CHINA

SUZHOU, CHINA
www.hiwin.cn
info@hiwin.cn

HIWIN USA

CHICAGO, U.S.A.
www.hiwin.us
info@hiwin.com

HIWIN FRANCE

STRASBOURG, FRANCE
www.hiwin.fr
info@hiwin.de

Mega-Fabs Motion Systems, Ltd.

HAIFA, ISRAEL
www.mega-fabs.com
info@mega-fabs.com

HIWIN Srl

BRUGHERIO, ITALY
www.hiwin.it
info@hiwin.it

HIWIN SINGAPORE

SINGAPORE
www.hiwin.sg
info@hiwin.sg

HIWIN®

HIWIN TECHNOLOGIES CORP.

No. 7, Jingke Road,
Taichung Precision Machinery Park,
Taichung 40852, Taiwan
Tel: +886-4-23594510
Fax: +886-4-23594420
www.hiwin.tw
www.hiwin.support.com
business@hiwin.tw

- HIWIN is a registered trademark of HIWIN Technologies Corp.. For your protection, avoid buying counterfeit products from unknown sources.
- Actual products may differ from specifications and photos provided in this catalog. These differences may be the result of various factors including product improvements.
- HIWIN website for patented product directory: http://www.hiwin.tw/Products/Products_patents.aspx
- HIWIN will not sell or export products or processes restricted under the "Foreign Trade Act" or related regulations. Export of restricted products should be approved by proper authorities in accordance with relevant laws and shall not be used to manufacture or develop nuclear, biochemical, missiles or other weapons.

The specifications in this catalog are subject to change without notification.

Copyright © HIWIN Technologies Corp.

©2023 FORM MSeries(E)-2309